

I hereby certify that the following Agenda was posted at least 72 hours prior to the time of the Board Meeting so noticed below at the usual agenda posting location of the South Orange County Wastewater Authority (SOCWA) and at www.socwa.com.



Danita Hirsh, Assistant Secretary
SOCWA and the Board of Directors thereof

*Regular Meeting of The
South Orange County Wastewater Authority
Board of Directors*

April 3, 2025
8:30 a.m.

PHYSICAL MEETING LOCATION:
South Orange County Wastewater Authority
34156 Del Obispo Street
Dana Point, CA 92629

THE BOARD OF DIRECTORS MEETING ROOM IS WHEELCHAIR ACCESSIBLE. IF YOU REQUIRE ANY SPECIAL DISABILITY RELATED ACCOMMODATIONS, PLEASE CONTACT THE SOUTH ORANGE COUNTY WASTEWATER AUTHORITY SECRETARY'S OFFICE AT (949) 234-5452 AT LEAST SEVENTY-TWO (72) HOURS PRIOR TO THE SCHEDULED MEETING TO REQUEST SUCH ACCOMMODATIONS. THIS AGENDA CAN BE OBTAINED IN ALTERNATE FORMAT UPON REQUEST TO THE SOUTH ORANGE COUNTY WASTEWATER AUTHORITY'S SECRETARY AT LEAST SEVENTY-TWO (72) HOURS PRIOR TO THE SCHEDULED MEETING. MEMBERS OF THE PUBLIC HAVE THE OPTION TO PARTICIPATE IN AND MAY JOIN THE MEETING REMOTELY VIA VIDEO CONFERENCE FOR VISUAL INFORMATION ONLY (USE ZOOM LINK BELOW) AND BY TELECONFERENCE FOR AUDIO PARTICIPATION (USE PHONE NUMBERS BELOW). THIS IS A PHONE-CALL MEETING AND NOT A WEB-CAST MEETING, SO PLEASE REFER TO AGENDA MATERIALS AS POSTED ON THE WEBSITE AT WWW.SOCWA.COM. ON YOUR REQUEST, EVERY EFFORT WILL BE MADE TO ACCOMMODATE PARTICIPATION. FOR PARTIES PARTICIPATING REMOTELY, PUBLIC COMMENTS WILL BE TAKEN DURING THE MEETING FOR ORAL COMMUNICATION IN ADDITION TO PUBLIC COMMENTS RECEIVED BY PARTIES PARTICIPATING IN PERSON. COMMENTS MAY BE SUBMITTED PRIOR TO THE MEETING VIA EMAIL TO ASSISTANT SECRETARY DANITA HIRSH AT DHIRSH@SOCWA.COM WITH THE SUBJECT LINE "REQUEST TO PROVIDE PUBLIC COMMENT." IN THE EMAIL, PLEASE INCLUDE YOUR NAME, THE ITEM YOU WISH TO SPEAK ABOUT, AND THE TELEPHONE NUMBER YOU WILL BE CALLING FROM SO THAT THE COORDINATOR CAN UN-MUTE YOUR LINE WHEN YOU ARE CALLED UPON TO SPEAK. THOSE MAKING PUBLIC COMMENT REQUESTS REMOTELY VIA TELEPHONE IN REAL-TIME WILL BE ASKED TO PROVIDE YOUR NAME, THE ITEM YOU WISH TO SPEAK ABOUT, AND THE TELEPHONE NUMBER THAT YOU ARE CALLING FROM SO THE COORDINATOR CAN UNMUTE YOUR LINE WHEN YOU ARE CALLED UPON TO SPEAK. ONCE THE MEETING HAS COMMENCED, THE CHAIR WILL INVITE YOU TO SPEAK AND ASK THE COORDINATOR TO UNMUTE YOUR LINE AT THE APPROPRIATE TIME.

AGENDA ATTACHMENTS AND OTHER WRITINGS THAT ARE DISCLOSABLE PUBLIC RECORDS DISTRIBUTED TO ALL, OR A MAJORITY OF, THE MEMBERS OF THE SOUTH ORANGE COUNTY WASTEWATER AUTHORITY BOARD OF DIRECTORS IN CONNECTION WITH A MATTER SUBJECT FOR DISCUSSION OR CONSIDERATION AT AN OPEN MEETING OF THE BOARD OF DIRECTORS ARE AVAILABLE FOR PUBLIC INSPECTION IN THE AUTHORITY ADMINISTRATIVE OFFICE LOCATED AT 34156 DEL OBISPO STREET, DANA POINT, CA ("AUTHORITY OFFICE") OR BY PHONE REQUEST MADE TO THE AUTHORITY OFFICE AT 949-234-5452. IF SUCH WRITINGS ARE DISTRIBUTED TO MEMBERS OF THE BOARD OF DIRECTORS LESS THAN SEVENTY-TWO (72) HOURS PRIOR TO THE MEETING, THEY WILL BE AVAILABLE IN THE RECEPTION AREA OF THE AUTHORITY OFFICE AT THE SAME TIME AS THEY ARE DISTRIBUTED TO THE BOARD OF DIRECTORS AND SENT TO ANY REMOTE PARTICIPANTS REQUESTING EMAIL DELIVERY OR POSTED ON SOCWA'S WEBSITE. IF SUCH WRITINGS ARE DISTRIBUTED IMMEDIATELY PRIOR TO, OR DURING, THE MEETING, THEY WILL BE AVAILABLE IN THE MEETING ROOM OR IMMEDIATELY UPON VERBAL REQUEST TO BE DELIVERED VIA EMAIL TO REQUESTING PARTIES PARTICIPATING REMOTELY.

THE PUBLIC MAY PARTICIPATE REMOTELY BY VIRTUAL MEANS. FOR AUDIO OF MEETING USE THE CALL IN PHONE NUMBERS BELOW AND FOR VIDEO USE THE ZOOM LINK BELOW.

Join Zoom Meeting
<https://socwa.zoom.us/>

Meeting ID: 830 7231 8275
Passcode: 444052

Dial by your location:

+1 669 900 6833 US (San Jose) +1 253 215 8782 US (Tacoma)
+1 346 248 7799 US (Houston) +1 312 626 6799 US (Chicago)

Find your local number: <https://socwa.zoom.us/j/k8N5lBxbU>

Agenda

- 1. CALL TO ORDER
- 2. PLEDGE OF ALLEGIANCE
- 3. ORAL COMMUNICATIONS

Members of the public may address the Board regarding an item on the agenda or may reserve this opportunity during the meeting at the time the item is discussed by the Board. There will be a three-minute limit for public comments.

- 4. APPROVAL OF BOARD MEMBER REQUEST FOR REMOTE PARTICIPATION

ACTION Board Discussion/Direction and Action.

- 5. CLOSED SESSION

- A. Closed Session Conference with Labor Negotiator Pursuant to Government Code § 54957.6

Agency Designated Representatives: Brad Neufeld, Labor Counsel
Amber Boone, General Manager
Employee Organization: SOCWA Employee Association

- B. Closed Session Conference with Legal Counsel – Anticipated Litigation – Significant Exposure to Litigation Pursuant to Paragraph (2) of Subdivision (d) of Government Code § 54956.9: One Potential Case.

- C. Report Out of Closed Session

PAGE NO.

- 6. CONSENT CALENDAR

- A. Minutes of Board of Directors..... 1

- Board of Directors Regular Meeting of March 6, 2025

ACTION The Board will be requested to approve the subject Minutes.

- B. Minutes of Engineering Committee 5

- Engineering Committee Meeting of February 13, 2025

ACTION The Board will be requested to receive and file the subject Minutes.

- C. Minutes of Finance Committee..... 9

- Finance Committee Meeting of January 21, 2025

ACTION The Board will be requested to receive and file the subject Minutes.

Agenda

PAGE NO.

- D. January 2025 Operations Report.....12
 - 1. Monthly Operational Report
 - 2. SOCWA Ocean Outfall Discharges by Agency

ACTION The Board will be requested to receive and file subject reports as submitted.

- E. February 2025 Operations Report22
 - 1. Monthly Operational Report
 - 2. SOCWA Ocean Outfall Discharges by Agency
 - 3. Beach Ocean Water Report
 - 4. Recycled Water Report
 - 5. Pretreatment Report (February & March 2025)

ACTION The Board will be requested to receive and file subject reports as submitted.

- F. Capital Improvement Program Status Report (March).....61

ACTION Information item.

- G. Capital Improvement Construction Projects Progress and Change Order Report (March) [Project Committees 2 and 15].....65

ACTION Information Item.

7. ENGINEERING MATTERS

- A. J.B. Latham Treatment Plant (JBL) Flare System and Underground Piping Replacement Final Design [Project Committee 2].....72

ACTION The Engineering Committee recommends that the PC 2 Board of Directors: i) approve a contract with MKN for a total of \$441,129 and ii) approve a project contingency of \$44,133 to cover potential unknown issues during final design for a total project budget of \$485,242.

8. GENERAL MANAGER'S REPORT

- A. FY 2025-26 Administration Budget Review81

ACTION Board Discussion/Direction and Action.

Agenda

PAGE NO.

- B. Resolution No. 2025-06, A Resolution of the Board of Directors of the South Orange County Wastewater Authority Authorizing Investment of Monies in the Local Agency Investment Fund (LAIF).....84

ACTION Staff recommends that the Board of Directors approve Resolution No. 2025-06, A Resolution of the Board of Directors of the South Orange County Wastewater Authority Authorizing Investment of Monies in the Local Agency Investment Fund (LAIF).

- C. Resolution No. 2025-07, A Resolution of the Board of Directors of the South Orange County Wastewater Authority Authorizing the Establishment of Deposit Accounts With BMO Harris Bank N.A.....87

ACTION Staff recommends that the Board of Directors approve Resolution No. 2025-07, A Resolution of the Board of Directors of the South Orange County Wastewater Authority Authorizing the Establishment of Deposit Accounts with BMO Harris Bank N.A.

- D. General Counsel's Update.....

ACTION Board Discussion/Direction and Action.

- E. General Manager's Report.....90

ACTION Board Discussion/Direction and Action.

- F. Upcoming Meetings Schedule:

- April 3, 2025 – Board of Directors Regular Meeting
- April 8, 2025 – Executive Committee Meeting
- April 10, 2025 – Engineering Committee Meeting
- April 15, 2025 – Finance Committee Meeting

ACTION Information Item.

9. OTHER MATTERS

Determine the need to take action on the following item(s) introduced by the General Manager, which arose after the posted agenda. [Adoption of this action requires a two-thirds vote of the Board, or if less than two-thirds are present, a unanimous vote.]

10. ADJOURNMENT

THE NEXT SOCWA BOARD MEETING
May 1, 2025

**MINUTES OF REGULAR MEETING
OF THE
SOUTH ORANGE COUNTY WASTEWATER AUTHORITY
Board of Directors**

March 6, 2025

DRAFT

The Regular Meeting of the South Orange County Wastewater Authority (SOCWA) Board of Directors Meeting was held in person and via teleconference on March 6, 2025, at 8:30 a.m. at their Administrative Offices located at 34156 Del Obispo Street, Dana Point, California. The following members of the Board of Directors were present:

MIKE DUNBAR	Emerald Bay Service District	Director
KATHRYN FRESHLEY	El Toro Water District	Director
GAVIN CURRAN	City of Laguna Beach	Alternate Director
FRANK URY	Santa Margarita Water District	Director
SCOTT GOLDMAN	South Coast Water District	Director
DAVE REBENS DORF	City of San Clemente	Director

Staff Present:

AMBER BOONE	General Manager
JIM BURROR	Deputy GM/Chief Engineer
RONI GRANT	CIP Manager
DINA ASH	HR Administrator
ANNA SUTHERLAND	Accountant
JACK BECK	Staff Accountant
BOB CULVER	Environmental Svc. Manager
JAMES JONES	Superintendent of O&M
MATT CLARKE	Chief Technology Officer
DANITA HIRSH	Clerk of the Board/Exec. Asst.

Also Present:

TRACIE STENDER	Snell & Wilmer
DENNIS CAFFERTY	El Toro Water District
MIKE GASKINS	El Toro Water District
LINDSAY LEAHY	Santa Margarita Water District
ANDREW GAGEN	Kidman Gagen Law LLP
KARI VOZENILEK	Kidman Gagen Law LLP
RICK SHINTAKU	South Coast Water District
MARC SERNA	South Coast Water District

1. CALL TO ORDER

Director Frank Ury called the meeting to order at 8:32 a.m.

2. PLEDGE OF ALLEGIANCE – Director Dave Rebensdorf

3. ORAL COMMUNICATIONS

None.

4. APPROVAL OF BOARD MEMBER REQUEST FOR REMOTE PARTICIPATION

None.

5. CONSENT CALENDAR

Ms. Amber Boone, General Manager, pulled agenda item 5.E., noting that El Toro Water District had requested an update to the tables on pages 18 and 20 of the report. The item will be brought back to the next Board meeting.

ACTION TAKEN

A motion was made by Director Goldman and seconded by Director Freshley to approve the remainder of the Consent Calendar as submitted.

Motion carried: Aye 6, Nay 0, Abstained 0, Absent 0
Director Dunbar Aye
Director Freshley Aye
Director Curran Aye
Director Ury Aye
Director Goldman Aye
Director Rebensdorf Aye

(5A-5D & 5F-5H)

- A. Minutes of Board of Directors Meeting for February 6, 2025
- B. Minutes of Project Committee 2 Meeting for February 6, 2025
- C. Minutes of Joint PC 2/PC 15 Meeting for January 23, 2025
- D. Minutes of Engineering Committee Meeting for November 14, 2024
- F. Capital Improvement Program Status Report (February)
Approved Action: Information Item; received and filed.
- G. Capital Improvement Construction Projects Progress and Change Order Report (November [Project Committees 2, 15 and 17])
Approved Action: Information Item; received and filed.
- H. North Coast Interceptor Project Property Acquisition and Coastal Development [Project Committee 23]
Approved Action: The PC 23 Board of Directors authorized the General Manager to execute all necessary permits, applications, and related documents where SOCWA is a co-applicant for the PC 23 North Coast Interceptor Forcemain Project being managed by the City of Laguna Beach.

6. GENERAL MANAGER'S REPORT

- A. OC Food Waste Diversion and Co-Digestion MOU

ACTION TAKEN

A motion was made by Director Ury and seconded by Director Goldman authorizing the General Manager to sign the OC Food Waste Diversion and Co-Digestion MOU.

Motion carried: Aye 5, Nay 0, Abstained 0, Absent 0
Director Dunbar Aye
Director Freshley Aye
Director Curran Aye
Director Ury Aye
Director Goldman Aye

- B. Resolution No. 2025-03, A Resolution of the Board of Directors of the South Orange County Wastewater Authority Amending "Exhibit A" Engineering Committee Bylaws revising the membership from seven (7) to six (6) with the meeting quorum requirements to remain at four (4) members

ACTION TAKEN

A motion was made by Director Dunbar and seconded by Director Ury approving Resolution No. 2025-03, A Resolution of the Board of Directors of the South Orange County Wastewater Authority Amending "Exhibit A" Engineering Committee Bylaws revising the membership from seven (7) to six (6) with the meeting quorum requirements to remain at four (4) members.

Motion carried: Aye 6, Nay 0, Abstained 0, Absent 0
Director Dunbar Aye
Director Freshley Aye
Director Curran Aye
Director Ury Aye
Director Goldman Aye
Director Rebensdorf Aye

- C. Resolution No. 2025-04, A Resolution of the Board of Directors of the South Orange County Wastewater Authority Amending Executive Committee Bylaws "Exhibit A"

ACTION TAKEN

A motion was made by Director Goldman and seconded by Director Dunbar to approve Resolution No. 2025-04, A Resolution of the Board of Directors of the South Orange County Wastewater Authority Adopting Amending Executive Committee Bylaws "Exhibit A."

Motion carried: Aye 6, Nay 0, Abstained 0, Absent 0
Director Dunbar Aye
Director Freshley Aye
Director Curran Aye
Director Ury Aye
Director Goldman Aye
Director Rebensdorf Aye

- D. SOCWA Staff Reorganization: Resolution No. 2025-05, A Resolution of the Board of Directors of the South Orange County Wastewater Authority Approving Revised Employee Salary Ranges and The South Orange County Wastewater Authority Employee Manual

ACTION TAKEN

A motion was made by Director Ury and seconded by Director Dunbar approving Resolution No. 2025-05, A Resolution of the Board of Directors of the South Orange County Wastewater Authority Approving Revised Employee Salary Ranges and The South Orange County Wastewater Authority Employee Manual.

///

///

Motion carried: Aye 6, Nay 0, Abstained 0, Absent 0
Director Dunbar Aye
Director Freshley Aye
Director Curran Aye
Director Ury Aye
Director Goldman Aye
Director Rebensdorf Aye

E. General Counsel's Update

Ms. Tracie Stender of Snell & Wilmer, speaking on behalf of Ms. Adriana Ochoa, General Counsel, reported on several pending legislation items in California. Additionally, she spoke on the Supreme Court decision on City and County of San Francisco v. EPA as it relates to the renewal of NPDES Permits. An open discussion ensued.

This was an information item; no action was taken.

F. General Manager's Report

Ms. Amber Boone thanked and appreciated her Executive team, stating that Jim Burror and Roni Grant have made tremendous contributions to the restructuring and strategic direction of SOCWA as an organization.

This was an information item; no actions were taken.

G. Upcoming Meetings Schedule:

- March 6, 2025 – Board of Directors Regular Meeting
- March 13, 2025 – Engineering Committee Meeting
- March 18, 2025 – Finance Committee Meeting
- April 3, 2025 – Board of Directors Regular Meeting

This was an information item; no actions were taken.

9. OTHER MATTERS

None.

10. ADJOURNMENT

There being no further business, Director Ury adjourned the meeting at 8:57 a.m.

I HEREBY CERTIFY that the foregoing Minutes are a true and accurate copy of the Minutes of the Regular Meeting of the South Orange County Wastewater Authority Board of Directors on March 6, 2025, and approved by the Board of Directors of the South Orange County Wastewater Authority.

Danita Hirsh, Assistant Secretary
SOUTH ORANGE COUNTY WASTEWATER AUTHORITY

**MINUTES OF REGULAR MEETING
OF THE
SOUTH ORANGE COUNTY WASTEWATER AUTHORITY**

Engineering Committee

February 13, 2025

The Regular Meeting of the South Orange County Wastewater Authority (SOCWA) Engineering Committee Meeting was held on February 13, 2025, at 8:30 a.m. in-person and via teleconferencing from the Administrative Offices located at 34156 Del Obispo Street, Dana Point, California. The following members of the Engineering Committee were present:

MIKE DUNBAR	Emerald Bay Service District
LINDSAY LEAHY	Santa Margarita Water District
MARC SERNA	South Coast Water District
MARK McAVOY	City of Laguna Beach

Absent:

DAVE REBENSDORF	City of San Clemente
HANNAH FORD	El Toro Water District

Staff Present:

AMBER BOONE	General Manager
RONI GRANT	Associate Engineer
JIM BURROR	Director of Operations
ANNA SUTHERLAND	Accounts Payable
MARY CAREY	Finance Controller
MATT CLARKE	IT Administrator
DANITA HIRSH	Executive Assistant

Also Present:

TARYN KJOLSING	South Coast Water District
ROGER BUTOW	Clean Water Now (CWN)
ROBB GRANTHAM	Santa Margarita Water District
DAVE LARSEN	Moulton Niguel Water District
RUSS BERGHOLZ	Dudek Engineers
ULISES ESCALONA	City of Laguna Beach

1. Call Meeting to Order

Ms. Roni Grant, Associate Engineer, called the meeting to order at 8:31 a.m.

2. Public Comments

Ms. Lindsay Leahy introduced herself as the new Deputy General Manager of Santa Margarita Water District and will represent SMWD on the Engineering Committee.

3. Approval of Minutes

- Engineering Committee Minutes of November 14, 2024

ACTION TAKEN

A motion was made by Mr. Dunbar and seconded by Mr. McAvoy to approve the Engineering Committee Minutes for November 14, 2024.

Motion carried:	Aye 4, Nay 0, Abstained 0, Absent 2
	Mr. McAvoy Aye
	Ms. Ford Absent
	Mr. Dunbar Aye
	Ms. Leahy Aye
	Mr. Serna Aye
	Mr. Rebensdorf Absent

4. General Manager's Report – Engineering Bylaws Update

Ms. Amber Boone, General Manager, updated the Committee on the proposed changes to the Engineering Committee Bylaws Exhibit "A." An open discussion ensued.

ACTION TAKEN

A motion was made by Mr. Dunbar and seconded by Ms. Leahy to recommend that the Board of Directors approve Resolution No. 2025-03, A Resolution of the Board of Directors of the South Orange County Wastewater Authority Amending Exhibit "A" Bylaws revising the Engineering Membership from seven (7) to six (6) with the meeting quorum requirements to remain at four (4) members.

Motion carried:	Aye 4, Nay 0, Abstained 0, Absent 2
	Mr. McAvoy Aye
	Ms. Ford Absent
	Mr. Dunbar Aye
	Ms. Leahy Aye
	Mr. Serna Aye
	Mr. Rebensdorf Absent

5. North Coast Interceptor Project Property Acquisition and Coastal Development Permit Application [Project Committee 23]

Mr. Ulises Escalona, Project Manager for the City of Laguna Beach, gave a presentation on the project. An open discussion ensued.

ACTION TAKEN

A motion was made by Mr. Dunbar and seconded by Mr. McAvoy to recommend that the PC 23 Board of Directors authorize the General Manager to execute all necessary permits, applications, and related documents where SOCWA is a co-applicant for the PC 23 North Coast Interceptor Forcemain Project being managed by the City of Laguna Beach.

Motion carried:	Aye 2, Nay 0, Abstained 0, Absent 0
	Mr. McAvoy Aye
	Mr. Dunbar Aye

6. Budgeted Capacity for FY 2025-2026

An open discussion ensued regarding an administrative update to table three (3) on page 13 of the agenda packet relating to the agency's restructuring agreement.

Public Speaker: David Larsen – Moulton Niguel Water District

This was an information item; no action was taken.

7. Operations Report

Mr. Jim Burror, Director of Operations, announced that Josh Papas was selected as the Interim Chief Operator at the Coastal Treatment Plant while the process continues in filling the position more permanently. Mr. Burror also stated that AQMD is finalizing and updating SOCWA's permits. An open discussion ensued.

This was an information item; no action was taken.

8. Capital Improvement Construction Projects Progress and Change Order Report (February)
[Project Committees 2 and 15]

Ms. Roni Grant, Associate Engineer, updated the Engineering Committee on the status of the following CIP projects:

- JBL Scum Line Replacement - Construction is currently in progress.
- JBL Electrical Upgrades - Pre-purchasing of MCC and Plant 1 Generator is underway.
- JBL and CTP SCADA System - Upgrades started earlier this year and are near completion.
- CTP Diffusers Replacement - The contractor substantially completed the contract work, and working out final punch list items.
- CTP Aeration/Secondary Deck Grating Replacement - Construction is currently in progress. A change order to install 1.5-inch grating in the secondary effluent area, replacing the originally planned 1-inch grating is recommended. This adjustment is necessary to enhance the safety of plant staff, as the area experiences high traffic and requires regular access. The change order amounts to \$8,639.53, bringing the revised total contract amount to \$158,000.78. In addition, 89 non-compensable days will be added to the contract for the changes, for a revised contract end date of June 30, 2025.
- CTP West Primary and Secondary Scum Skimming System - Pre-Purchasing of scum skimmers, launders, and weirs is currently in progress.
- CTP Auxiliary Blower Building Roof Replacement - The Notice to Proceed (NTP) has been issued to Best Contracting Services.
CTP Personnel Building Sewer Rehabilitation – The Notice to Proceed (NTP) has been issued to T.E. Roberts.

This was an information item; no action was taken.

9. J.B. Latham Treatment Plant (JBL) Aeration Flare System and Underground Piping Replacement Project [Project Committee 2]

An open discussion ensued regarding tabling the project until after a thorough interview with the top two consultants to perform the work had been completed. No action has been taken.

10. San Bernadino Municipal Water District Phase 1 Biosolids Facility Study [Project Committee 2]

An open discussion ensued regarding the San Bernadino Municipal Water District (SBMWD) wanting to develop a Phase 1 Biosolids Program Feasibility Study for a processing facility that would receive, treat, and dispose of biosolids. The facility would be owned and operated by their water district. SBMWD is seeking a \$50,000 commitment from agencies wanting to participate.

This was an information item; no action was taken.

11. Coastal Treatment Plant (CTP) Blower System Upgrades Preliminary Design Agency Allocation [Project Committee 15]

An open discussion ensued regarding finalizing the member agency allocation for Project Committee 15. Director Dunbar of Emerald Bay Services District has agreed to absorb the difference, allowing the assignment allocation to total 100%.

This was an information item; no action was taken.

12. Adjournment

There being no further business, Ms. Grant adjourned the meeting at 9:23 a.m.

I HEREBY CERTIFY that the foregoing Minutes are a true and accurate copy of the Minutes of the Regular Meeting of the South Orange County Wastewater Authority Engineering Committee of February 13, 2025, and approved by the Engineering Committee and received and filed by the Board of Directors of the South Orange County Wastewater Authority.

Danita Hirsh, Assistant Board Secretary
SOUTH ORANGE COUNTY WASTEWATER AUTHORITY

**MINUTES OF SPECIAL MEETING
OF THE
SOUTH ORANGE COUNTY WASTEWATER AUTHORITY
Finance Committee**

January 21, 2025

The Special Meeting of the South Orange County Wastewater Authority (SOCWA) Finance Committee Meeting was held on January 21, 2025, at 10:30 a.m. in-person and via teleconference from the Administrative Offices located at 34156 Del Obispo Street, Dana Point, California. The following members of the Finance Committee were present:

GAVIN CURRAN	City of Laguna Beach	Alternate Director
KATHRYN FRESHLEY	El Toro Water District	Director
RICK SHINTAKU	South Coast Water District	Alternate Director
PAUL PENDER	Santa Margarita Water District	Alternate Director [exited @ 11:34 a.m.]

Absent:

UNREPRESENTED	Moulton Niguel Water District
---------------	-------------------------------

Staff Participation:

AMBER BOONE	Acting General Manager
MARY CAREY	Finance Controller
JIM BURROR	Director of Operations
JACK BECK	Staff Accountant
ANNA SUTHERLAND	Accounts Payable
DINA ASH	HR Administrator
MATT CLARKE	IT Administrator
DANITA HIRSH	Executive Assistant

Also Participating:

ADRIANA OCHOA	Snell & Wilmer
JOE MULLER	South Coast Water District
KRISTI EVEN	South Coast Water District
JENNY PAN	South Coast Water District
SANDER HUANG	South Coast Water District
CHRIS WILLIAMS	Public Participant

1. Call Meeting to Order

Chairperson Paul Pender called the meeting to order at 10:40 a.m.

2. Public Comments

None.

3. Approval of Minutes

- Finance Committee Meeting of November 19, 2024.

ACTION TAKEN

A motion was made by Director Shintaku and seconded by Director Freshley to approve the Minutes for November 19, 2024, as submitted.

Motion carried:	Aye 4, Nay 0, Abstained 0, Absent 1
	Director Curran Aye
	Director Cafferty Aye
MNWD	Unrepresented Absent
	Director Pender Aye
	Director Shintaku Aye

4. Financial Reports for the Month of November 2024 & Cash Disbursements for the Months of October 2024 & November 2024

ACTION TAKEN

A motion was made by Director Freshley and seconded by Director Curran to recommend that the Board of Directors (i) receive and file the November 2024 Financial Reports, (ii) ratify the October 2024 disbursement for the period from October 1, 2024, through October 31, 2024, totaling \$2,654,991, and (iii) ratify the November 2024 Disbursement for the period from November 1, 2024, through November 30, 2024, totaling \$2,193,190.

Motion carried:	Aye 4, Nay 0, Abstained 0, Absent 1
	Director Curran Aye
	Director Cafferty Aye
MNWD	Unrepresented Absent
	Director Pender Aye
	Director Shintaku Aye

5. Fiscal Year 2023-24 Supplemental Financial Report

ACTION TAKEN

A motion was made by Director Freshley and seconded by Director Curran to recommend that the Board of Directors approve the FY 2023-24 Annual Financial Statements Audit.

Motion carried:	Aye 4, Nay 0, Abstained 0, Absent 1
	Director Curran Aye
	Director Cafferty Aye
MNWD	Unrepresented Absent
	Director Pender Aye
	Director Shintaku Aye

6. Budgeted Capacity for FY2025-26

ACTION TAKEN

A motion was made by Director Shintaku and seconded by Director Curran to recommend that the Board of Directors approve the Environmental Technical Services cost allocations.

///

///

Motion carried:	Aye 4, Nay 0, Abstained 0, Absent 1
	Director Curran Aye
	Director Cafferty Aye
MNWD	Unrepresented Absent
	Director Pender Aye
	Director Shintaku Aye

7. Finance Committee Bylaws Update

ACTION TAKEN

A motion was made by Director Curran and seconded by Director Freshley to recommend that the Board of Directors (i) update the number of representatives from “up to six” to “four” representatives and (ii) amend Section 5 of the Finance Committee Bylaws to modify the quorum requirement from a majority to three (3) members to be approved.

Motion carried:	Aye 4, Nay 0, Abstained 0, Absent 1
	Director Curran Aye
	Director Cafferty Aye
MNWD	Unrepresented Absent
	Director Pender Aye
	Director Shintaku Aye

8. Chart of Accounts Update to Improve Administrative Efficiency

The meeting lost quorum at 11:34 a.m. therefore, only an open discussion occurred; no action was taken on agenda item 8.

9. Adjournment

There being no further business, Kathryn Freshley adjourned the meeting at 11:41 a.m.

I HEREBY CERTIFY that the foregoing Minutes are a true and accurate copy of the Minutes of the Special Meeting of the South Orange County Wastewater Authority Finance Committee of January 21, 2025, and approved by the Finance Committee and received and filed by the Board of Directors of the South Orange County Wastewater Authority.

Danita Hirsh / Assistant Secretary
SOUTH ORANGE COUNTY WASTEWATER AUTHORITY

Agenda Item

6.D.

Board of Directors Meeting

Meeting Date: April 3, 2025

TO: Board of Directors
FROM: Jim Burror, Deputy General Manager/Chief Engineer
SUBJECT: January 2025 Operations Report

Summary/Discussion

The following selected operational reports are provided monthly to the Board of Directors. The operational reports included are as follows:

1. Monthly Operational Report

A six (6) page overview and comparison of owner use of facilities, including influent and recycled water production. The pages include ongoing calculations used by SOCWA for billing the agencies. Other items include important statistics for regulatory compliance, visits by the public to the treatment works, and other vendor interactions. The information is broken down by facility and by Member Agency.

2. SOCWA Ocean Outfall Discharges by Agency

This data shows how much water is being discharged into the ocean each month and for the last 12 months. This data is presented for the agencies planning reuse projects to better understand the potential to expand water reuse in their service area.

Fiscal Impact

No change.

Recommended Action: Receive and file the Operational Reports.

Monthly Operational Report

SOCWA Operational Report January 2025

Excursion, Complaint, and Violation Events

Events	CTP	JBL	Totals
Odor	0	0	0
Noise	0	0	0
Spills	0	0	0
Violations	0	0	0
Others	0	0	0

Plant Wastewater Characteristics

Key Parameters	CTP	JBL TP1	JBL TP2	Total
Influent (mgd) (1)	2.42	7.57	1.03	11.02
Effluent (mgd)	2.35	7.57	2.16	12.09
Peak Flow (mgd)	6.22	11.17	6.53	23.92
Influent BOD (mg/l)	245	324	395	
Influent TSS (mg/l)	296	450	307	
Effluent BOD (mg/l)	3.9	8.1	8.2	
Effluent TSS (mg/l)	4.3	10.0	12.1	
Effluent Turbidity (NTU)	1.1	4.8	5.5	

(1) CTP Influent value does not include AWT backwash in this table.

Recycled Water (AWT) Operations

Key Parameters	CTP	JBL	Totals
Average Flow (mgd)	0.58		0.58
Days of Operation (days)	31		
Total Flow (million gallons)	17.9		17.89
Plant Irrigation (million gallons)	0.1	0.17	0.3
AWT Time Online (%)	99.7		

Wastewater Unit Definitions

mgd = million gallons per day

mg/l = milligram per liter also known as parts per million

NTU = Nephelometric Turbidity Units

SOCWA Operational Report January 2025 (cont'd)

Biosolids Management

Biosolids Management Site	CTP	JBL	Totals
Nursery Products (tons)		694.0	694.0
Prima Deshecha (tons)		95.8	95.8
Other: (tons)		0.0	0.0
Total Processed (tons)		789.8	789.8

Summary of Maintenance Activities

Task Type	CTP	JBL	Totals
Preventative Maintenance	200	248	448
Corrective Maintenance	20	70	90

Site Visitors

Visitor Types	CTP	JBL	Totals
Regulatory	0	0	0
Member Agency	1	1	2
Residents	0	0	0
Others	0	23	23
Tours #/Visitors	0	0	0

Grit Disposal Management

Grit & Screenings	CTP	JBL	Totals
Simi Valley Landfill (tons)	6.0	42.3	48.3

Chemical and Energy Utilization

Chemical/Utility	CTP	JBL	Totals
Ferric Chloride (tons)	NA	NA	NA
Utility Power Purchase (kWh)	189,937	218,916	408,853
Cogen Power (kWh)		440,083	440,083
Natural Gas (Dth)	36	983	1,018
Digester Gas to Engine (scfm)		5,633,847	5,633,847
Digester Gas to Boiler (scfm)		38,100	38,100
Digester Gas to Flares (scfm)		755,760	755,760

NA = Not Available at the time this report was generated.

Wastewater Unit Definitions

kWh = kilowatt hours

Dth = Dekatherms

scfm = standard cubic feet per minute

SOCWA Operational Report January 2025 (cont'd)

Agency Flows to SOCWA Operated Treatment Plants (Including Internal Waste Streams Used for Billing)

Agency	CTP (mgd)	CTP (%)	JBL (mgd)	JBL (%)	Total (mgd)
CLB	1.406	55.93%			1.406
EBSB	0.055	2.20%			0.055
SCWD	1.052	41.87%	3.097	36.00%	4.150
SMWD			5.507	64.00%	5.507
Total	2.513	100.00%	8.604	100.00%	11.118

Total Agency Outfall Flows by Outfall System-Billing Flows

Agency	SJCOO (mgd)	SJCOO (%)	ACOO (mgd)	ACOO (%)	Total (mgd)	Notes
CLB			1.41	12.83%	1.41	
EBSB			0.06	0.51%	0.06	
SCWD	4.91	32.69%	0.76	6.97%	5.67	Includes MNWD
ETWD			8.73	79.69%	8.73	Includes IRWD and MNWD
SMWD	7.30	48.68%			7.30	Includes CSJC
CSC	2.79	18.63%			2.79	
Total	15.00	100.00%	10.96	100.00%	25.96	

SOCWA Operational Report January 2025 (cont'd)

FY Flow/Solids Summary-Billing

Project Committee No. 2 Liquids (JBL)

Agency	Own (mgd)	Own (%)	Budget (mgd)	Budget (%)	Month (mgd)(1)	Month (%)	FY Avg to Date (mgd)	FY Avg to Date (%)
SCWD	6.75	51.92%	2.998	39.11%	3.097	36.00%	3.07	35.94%
SMWD	6.25	48.08%	4.667	60.89%	5.507	64.00%	5.47	64.06%
Total	13.00	100.00%	7.665	100.00%	8.604	100.00%	8.53	100.00%

Project Committee No. 2 Solids (JBL)

Agency	Own (lbs/d)	Own (%)	Budget (lbs/d)	Budget (%)	Month (lbs/d)	Month (%)	36 Month Rol. Avg. (lbs/d) (2)	36 Month Rol. Avg. (%)
SCWD	16,055	41.62%	10,876	35.92%	7,354	28.21%	8,433	36.48%
SMWD	22,518	58.38%	19,402	64.08%	18,715	71.79%	14,686	63.52%
Total	38,573	100.00%	30,278	100.00%	26,069	100.00%	23,119	100.00%

Project Committee No. 5 - San Juan Creek Ocean Outfall (SJCOO)

Agency	Own (%)	Budget (mgd)	Budget (%)	Month (mgd)	Month (%)	FY Avg to Date (mgd)	FY Avg to Date (%)
CSC	16.62%	13.296	16.62%	2.794	18.63%	2.539	19.83%
SCWD(3)	18.83%	15.064	18.83%	4.905	32.69%	4.057	31.69%
SMWD(4)	64.55%	51.640	64.55%	7.304	48.68%	6.208	48.48%
Total	100.00%	80.000	100.00%	15.003	100.00%	12.804	100.00%

(1) Influent billing meter summary:

- a. CSJC is metered daily in the collection system. The area-velocity meter has an accuracy of +/- 20%.
- b. MNWD flows with SCWD flows are assumed to be 1.4 mgd unless Treatment Plant 3A is discharging to the sewer. If other discharges occur, they are estimated.
- c. SCWD flows are the summation of the DPSD and Victoria PS meters. The two metering systems have an accuracy of +/- 10%.
- d. The Oso Trabuco sewer is metered daily in the collection system. The flows from MNWD are subtracted from the metering data collected to determine SMWD's flows. The metering system in the collection system has an accuracy of +/- 20%.

(2) The 36-month average is the average of the past 36 months. The Use Audit is based on the last 3 Fiscal Years versus the average of the past 36 months.

(3) All monthly flow data for MNWD is reported as part of SCWD's flow to the ocean outfall.

(4) All monthly flow data from CSJC is reported as part of SMWD's flow to the ocean outfall.

SOCWA Operational Report January 2025 (cont'd)

FY Flow/Solids Summary-Billing (cont'd)

Project Committee No. 15 (CTP)

Agency	Own (mgd)	Own (%)	Budget (mgd)	Budget (%)	Month (mgd)	Month (%)	FY Avg to Date (mgd)	FY Avg to Date (%)
CLB	3.64	54.33%	1.430	53.56%	1.406	55.93%	1.521	56.74%
EBSB	0.20	2.99%	0.060	2.25%	0.055	2.20%	0.063	2.36%
SCWD	2.86	42.69%	1.180	44.19%	1.052	41.87%	1.096	40.90%
Total	6.70	100.00%	2.670	100.00%	2.513	100.00%	2.681	100.00%

Project Committee No. 24 (ACOO)

Agency	Own (%)	Budget (mgd)	Budget (%)	Month Outfall Flow (mgd)	Month Outfall Flow (%)	FY Avg Outfall Flow (mgd)	FY Avg Outfall Flow (%)
CLB	11.00%	5.500	11.00%	1.406	12.83%	1.521	19.37%
EBSB	0.78%	0.390	0.78%	0.055	0.51%	0.063	0.81%
ETWD	16.30%	8.151	16.30%	2.646	24.15%	1.825	23.24%
MNWD(1)	43.85%	21.924	43.85%	2.960	27.01%	2.341	29.81%
IRWD(1)	15.76%	7.880	15.76%	3.127	28.53%	1.453	18.50%
SCWD	12.31%	6.155	12.31%	0.764	6.97%	0.650	8.28%
Total	100.00%	50.000	100.00%	10.958	100.00%	7.853	100.00%

(1) Permitted flow to the ACOO from IRWD and MNWD who are not member agencies of SOCWA.

SOCWA Operational Report January 2025 (cont'd)

Select Critical Equipment Repairs

JBL - PC2

Rebuilt TWAS Borger Lobe Pump #2 at JBL.
Troubleshoot failed Primary Scum Skimmer #5 at JBL.
Troubleshoot failed on Scrubber Recirc Pump at JBL.
Replaced components and tested repairs on 9-Side Scrubber at JBL.
Troubleshoot failed Boiler Recirc Pump at JBL.
Repaired Raw Sewage Pump #7 at JBL.
Troubleshoot Digester Airvac Digester #3 and #4 at JBL.
Replaced failed components and tested repairs on the Polymer Feed Pump at JBL.
Troubleshoot system and tested repairs on Solids Scrubber at JBL.
Troubleshoot failed Cogen Natural Gas Flow Meter at JBL.
Troubleshoot failed Primary Sludge Total Meter at JBL.
Replaced components and tested repairs on Digester Mix Pump #1 at JBL.
Overhauled Primary Tanks Nos. 1 through 6 at JBL.
Troubleshoot failed Scrubber Recirc Pump #2 at JBL.
Troubleshoot system and tested repairs on Dyna Blend Poly Mixers at JBL.
Troubleshoot system and tested repairs on Air Gap/Pressurization Tank at JBL.
Troubleshoot system and tested repairs on Boiler Room #1 Bldg 60 at JBL.
Troubleshoot system and tested repairs on Screenings Conveyor #1 at JBL.
Troubleshoot system and tested repairs on Aeration Blower #5 at JBL.
Swapped out the failed recirc pump on Solids Scrubber at JBL.
Replaced the Cogen's media in H₂S Removal Vessel #2 at JBL.
Rebuilt and tested repairs on Primary Hopper Valves at JBL.
Troubleshoot system and tested repairs on Digesters #1 & #2 Gas Meter at JBL.
Replaced and tested repairs on Waste Gas Flame Arrester #1 at JBL.
Troubleshoot system and tested repairs on Primary Sludge Pump #4 at JBL.

CTP - PC15

Replaced several failed Airvac at CTP.
Troubleshoot clogged Grit Classifier #2 at CTP.
Overhauled Primary Sludge Control Panel at CTP.
Troubleshoot failed Secondary #4 / East #1 Drive at CTP.
Troubleshoot failed TWAS Pump #1 / North at CTP.
Troubleshoot failed AWT Effluent Sampling Pump at CTP.
Replaced failed West Secondary Nitrate Probe at CTP.

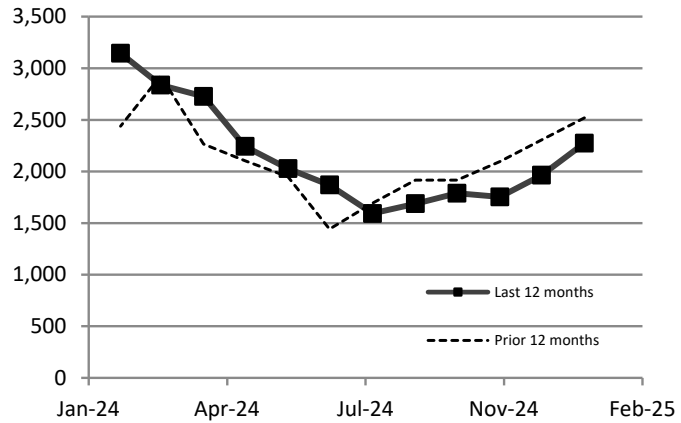
SOCWA Ocean Outfall Discharges by Agency

SOCWA Operational Report January 2025 (cont'd)

Agency	SJCOO (mgd)	SJCOO (%)	ACOO (mgd)	ACOO (%)	Total (mgd)
CLB			1.41	12.83%	1.41
EBSD			0.06	0.51%	0.06
SCWD	4.91	32.69%	0.76	6.97%	5.67
ETWD			8.73	79.69%	8.73
SMWD	7.30	48.68%			7.30
CSC	2.79	18.63%			2.79
Total	15.00	100.00%	10.96	100.00%	25.96
or Acre-Feet per year equivalent					29,077

12-Month Running Total Discharge to Ocean Outfalls (AF)

Jan-25	2,274
Dec-24	1,964
Nov-24	1,754
Oct-24	1,789
Sep-24	1,688
Aug-24	1,593
Jul-24	1,869
Jun-24	2,028
May-24	2,243
Apr-24	2,727
Mar-24	2,837
Feb-24	3,146
Total	25,911



Agenda Item

6.E.

Board of Directors Meeting

Meeting Date: April 3, 2025

TO: Board of Directors
FROM: Jim Burror, Deputy General Manager/Chief Engineer
SUBJECT: February 2025 Operations Report

Summary/Discussion

The following selected operational reports are provided monthly to the Board of Directors. The operational reports included are as follows:

1. Monthly Operational Report

A six (6) page overview and comparison of owner use of facilities, including influent and recycled water production. The pages include ongoing calculations used by SOCWA for billing the agencies. Other items include important statistics for regulatory compliance, visits by the public to the treatment works, and other vendor interactions. The information is broken down by facility and by Member Agency.

2. SOCWA Ocean Outfall Discharges by Agency

This data shows how much water is being discharged into the ocean each month and for the last 12 months. This data is presented for the agencies planning reuse projects to better understand the potential to expand water reuse in their service area.

3. Beach Ocean Monitoring Report

4. Recycled Water Report

5. Pretreatment Report (February & March 2025)

Fiscal Impact

No change.

Recommended Action: Receive and file the Operational Reports.

Monthly Operational Report

SOCWA Operational Report February 2025

Excursion, Complaint, and Violation Events

Events	CTP	JBL	Totals
Odor	0	0	0
Noise	0	0	0
Spills	0	0	0
Violations	0	0	0
Others	0	0	0

Plant Wastewater Characteristics

Key Parameters	CTP	JBL TP1	JBL TP2	Total
Influent (mgd) (1)	2.36	7.49	1.05	10.90
Effluent (mgd)	2.60	7.49	2.16	12.26
Peak Flow (mgd)	10.60	19.81	9.36	39.77
Influent BOD (mg/l)	313	333	315	
Influent TSS (mg/l)	311	410	300	
Effluent BOD (mg/l)	4.3	8.5	6.4	
Effluent TSS (mg/l)	4.6	9.3	8.5	
Effluent Turbidity (NTU)	1.3	4.6	3.7	

(1) CTP Influent value does not include AWT backwash in this table.

Recycled Water (AWT) Operations

Key Parameters	CTP	JBL	Totals
Average Flow (mgd)	0.23		0.23
Days of Operation (days)	13		
Total Flow (million gallons)	6.47		6.47
Plant Irrigation (million gallons)	0.10	0.19	0.29
AWT Time Online (%)	44.2		

Wastewater Unit Definitions

mgd = million gallons per day

mg/l = milligram per liter also known as parts per million

NTU = Nephelometric Turbidity Units

SOCWA Operational Report February 2025 (cont'd)

Biosolids Management

Biosolids Management Site	CTP	JBL	Totals
Nursery Products (tons)		661.4	661.4
Prima Deshecha (tons)		46.9	46.9
Other: (tons)		0.0	0.0
Total Processed (tons)		708.3	708.3

Summary of Maintenance Activities

Task Type	CTP	JBL	Totals
Preventative Maintenance	165	208	373
Corrective Maintenance	9	62	71

Site Visitors

Visitor Types	CTP	JBL	Totals
Regulatory	0	1	1
Member Agency	0	1	1
Residents	0	0	0
Others	0	27	27
Tours #/Visitors	0	4	4

Grit Disposal Management

Grit & Screenings	CTP	JBL	Totals
Simi Valley Landfill (tons)	7.5	42.5	50.1

Chemical and Energy Utilization

Chemical/Utility	CTP	JBL	Totals
Ferric Chloride (tons)	NA	NA	NA
Utility Power Purchase (kWh)	212,495	289,754	502,249
Cogen Power (kWh)		333,359	333,359
Natural Gas (Dth)	NA	817	817
Digester Gas to Engine (scfm)		4,269,968	4,269,968
Digester Gas to Boiler (scfm)		199,678	199,678
Digester Gas to Flares (scfm)		1,515,150	1,515,150

NA = Not Available at the time this report was generated.

Wastewater Unit Definitions

kWh = kilowatt hours

Dth = Dekatherms

scfm = standard cubic feet per minute

SOCWA Operational Report February 2025 (cont'd)

Agency Flows to SOCWA Operated Treatment Plants (Including Internal Waste Streams Used for Billing)

Agency	CTP (mgd)	CTP (%)	JBL (mgd)	JBL (%)	Total (mgd)
CLB	1.388	57.61%			1.388
EBSB	0.058	2.42%			0.058
SCWD	0.963	39.97%	2.853	33.40%	3.816
SMWD			5.687	66.60%	5.687
Total	2.409	100.00%	8.540	100.00%	10.949

Total Agency Outfall Flows by Outfall System-Billing Flows

Agency	SJCOO (mgd)	SJCOO (%)	ACOO (mgd)	ACOO (%)	Total (mgd)	Notes
CLB			1.39	9.52%	1.39	
EBSB			0.06	0.40%	0.06	
SCWD	4.62	32.19%	1.09	7.45%	5.71	Includes MNWD
ETWD			12.04	82.63%	12.04	Includes IRWD and MNWD
SMWD	6.58	45.84%			6.58	Includes CSJC
CSC	3.15	21.97%			3.15	
Total	14.35	100.00%	14.58	100.00%	28.93	

SOCWA Operational Report February 2025 (cont'd)

FY Flow/Solids Summary-Billing

Project Committee No. 2 Liquids (JBL)

Agency	Own (mgd)	Own (%)	Budget (mgd)	Budget (%)	Month (mgd)(1)	Month (%)	FY Avg to Date (mgd)	FY Avg to Date (%)
SCWD	6.75	51.92%	2.998	39.11%	2.853	33.40%	3.04	35.62%
SMWD	6.25	48.08%	4.667	60.89%	5.687	66.60%	5.49	64.38%
Total	13.00	100.00%	7.665	100.00%	8.540	100.00%	8.53	100.00%

Project Committee No. 2 Solids (JBL)

Agency	Own (lbs/d)	Own (%)	Budget (lbs/d)	Budget (%)	Month (lbs/d)	Month (%)	36 Month Rol. Avg. (lbs/d) (2)	36 Month Rol. Avg. (%)
SCWD	16,055	41.62%	10,876	35.92%	5,863	25.53%	8,205	35.90%
SMWD	22,518	58.38%	19,402	64.08%	17,102	74.47%	14,648	64.10%
Total	38,573	100.00%	30,278	100.00%	22,966	100.00%	22,853	100.00%

Project Committee No. 5 - San Juan Creek Ocean Outfall (SJCOO)

Agency	Own (%)	Budget (mgd)	Budget (%)	Month (mgd)	Month (%)	FY Avg to Date (mgd)	FY Avg to Date (%)
CSC	16.62%	13.296	16.62%	3.152	21.97%	2.610	20.10%
SCWD(3)	18.83%	15.064	18.83%	4.620	32.19%	4.120	31.73%
SMWD(4)	64.55%	51.640	64.55%	6.579	45.84%	6.253	48.16%
Total	100.00%	80.000	100.00%	14.351	100.00%	12.982	100.00%

(1) Influent billing meter summary:

- a. CSJC is metered daily in the collection system. The area-velocity meter has an accuracy of +/- 20%.
- b. MNWD flows with SCWD flows are assumed to be 1.4 mgd unless Treatment Plant 3A is discharging to the sewer. If other discharges occur, they are estimated.
- c. SCWD flows are the summation of the DPSD and Victoria PS meters. The two metering systems have an accuracy of +/- 10%.
- d. The Oso Trabuco sewer is metered daily in the collection system. The flows from MNWD are subtracted from the metering data collected to determine SMWD's flows. The metering system in the collection system has an accuracy of +/- 20%.

(2) The 36-month average is the average of the past 36 months. The Use Audit is based on the last 3 Fiscal Years versus the average of the past 36 months.

(3) All monthly flow data for MNWD is reported as part of SCWD's flow to the ocean outfall.

(4) All monthly flow data from CSJC is reported as part of SMWD's flow to the ocean outfall.

SOCWA Operational Report February 2025 (cont'd)

FY Flow/Solids Summary-Billing (cont'd)

Project Committee No. 15 (CTP)

Agency	Own (mgd)	Own (%)	Budget (mgd)	Budget (%)	Month (mgd)	Month (%)	FY Avg to Date (mgd)	FY Avg to Date (%)
CLB	3.64	54.33%	1.430	53.56%	1.388	57.61%	1.506	56.83%
EBSB	0.20	2.99%	0.060	2.25%	0.058	2.42%	0.063	2.37%
SCWD	2.86	42.69%	1.180	44.19%	0.963	39.97%	1.081	40.80%
Total	6.70	100.00%	2.670	100.00%	2.409	100.00%	2.649	100.00%

Project Committee No. 24 (ACOO)

Agency	Own (%)	Budget (mgd)	Budget (%)	Month Outfall Flow (mgd)	Month Outfall Flow (%)	FY Avg Outfall Flow (mgd)	FY Avg Outfall Flow (%)
CLB	11.00%	5.500	11.00%	1.388	9.52%	1.506	17.45%
EBSB	0.78%	0.390	0.78%	0.058	0.40%	0.063	0.73%
ETWD	16.30%	8.151	16.30%	3.404	23.36%	2.007	23.26%
MNWD(1)	43.85%	21.924	43.85%	4.669	32.03%	2.609	30.24%
IRWD(1)	15.76%	7.880	15.76%	3.970	27.24%	1.743	20.20%
SCWD	12.31%	6.155	12.31%	1.086	7.45%	0.700	8.12%
Total	100.00%	50.000	100.00%	14.576	100.00%	8.628	100.00%

(1) Permitted flow to the ACOO from IRWD and MNWD who are not member agencies of SOCWA.

SOCWA Operational Report February 2025 (cont'd)

Select Critical Equipment Repairs

JBL - PC2

Inspected and troubleshot the Cogen Hot Water Pump at JBL.
Calibrated Digester Dome Air Vacs at JBL.
Replaced failed Primary Scum Skimmers #1 and #3 wear strips at JBL.
Replaced failed Air Compressor DAFT #1 at JBL.
Troubleshooted Digester Waste Gas Burner at JBL.
Replaced Waste Pump #2 and tested repairs at JBL.
Replaced failed Scrubber Recirc Pump #2 and tested repairs at JBL.
Replaced failed Polymer Transfer Pump #1 and tested repairs at JBL.
Replaced Cogen Heat Exchanger and tested repairs at JBL.
Continued troubleshooting failed Aeration Blower #7 with the Vendor at JBL.
Troubleshooted failed Inline Fan Plant #1 Grit Tank and tested repairs at JBL.
Repaired Boiler Room #1 Bldg 60 and tested repairs at JBL.
Troubleshooted failed Grit Pump #4 and tested repairs at JBL.
Troubleshooted failed Primary Sludge Pump #4 and tested repairs at JBL.
Troubleshooted failed Grit Pump #3 and tested repairs at JBL.
Troubleshooted failed Odor Scrubber #1 Fan and tested repairs at JBL.
Troubleshooted failed Sludge Feed Pump #2 and tested repairs at JBL.
Rebuilt failed Screenings Conveyor #1 and tested repairs at JBL.
Replaced failed Primary Hopper Valves and tested repairs at JBL.
Troubleshooted failed Muffin Monster (Cent. Feed Pump Area) and tested repairs at JBL.
Replaced failed Dyna Blend Poly Mixer #2 and tested repairs at JBL.
Continued troubleshooting failed Aeration Blower #5 with Vendor at JBL.
Replaced failed Primary Sludge Pump #1 and tested repairs at JBL.
Replaced failed Primary Skimmer Drive #3 wear parts at JBL.

CTP - PC15

Replaced failed Chemical Mixer #1 at CTP.
Replaced failed Scrubber Bleach Pump at CTP.
Replaced failed RAS Valve #4 at CTP.
Replaced failed AWT Effluent Sampling Pump at CTP.
Troubleshooted failing air system for Aeration Tank #3 at CTP.
Troubleshooted failing DPS Dialer at CTP.
Troubleshooted failing RAS Valve #3 at CTP.

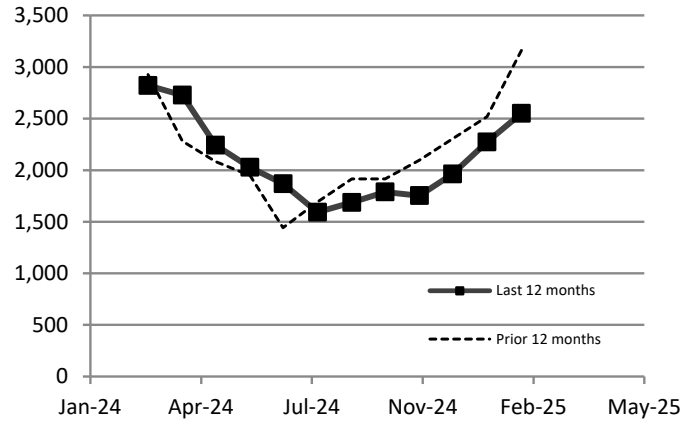
SOCWA Ocean Outfall Discharges by Agency

SOCWA Operational Report February 2025 (cont'd)

Agency	SJCOO (mgd)	SJCOO (%)	ACOO (mgd)	ACOO (%)	Total (mgd)
CLB			1.39	9.52%	1.39
EBSD			0.06	0.40%	0.06
SCWD	4.62	32.19%	1.09	7.45%	5.71
ETWD			12.04	82.63%	12.04
SMWD	6.58	45.84%			6.58
CSC	3.15	21.97%			3.15
Total	14.35	100.00%	14.58	100.00%	28.93
or Acre-Feet per year equivalent					32,398

12-Month Running Total Discharge to Ocean Outfalls (AF)

Feb-25	2,551
Jan-25	2,274
Dec-24	1,964
Nov-24	1,754
Oct-24	1,789
Sep-24	1,688
Aug-24	1,593
Jul-24	1,869
Jun-24	2,028
May-24	2,243
Apr-24	2,727
Mar-24	2,821
Total	25,301



Beach / Ocean Monitoring Report

ALISO CREEK OCEAN OUTFALL MONITORING REPORT

February 2025

DATE	IRWD LOS ALISOS WRP				EL TORO WRP				SOCWA REGIONAL PLANT				SOCWA COASTAL PLANT				IRWD IDP	IRWD SGU	SCWD ACWRF	ACOO FLOW	Rain Fall
	FLOW	TSS	cBOD	SS	FLOW	TSS	cBOD	SS	FLOW	TSS	cBOD	SS	FLOW	TSS	cBOD	SS	FLOW	FLOW	FLOW	FLOW	inches
	MGD	mg/L	mg/L	ml/L	MGD	mg/L	mg/L	ml/L	MGD	mg/L	mg/L	ml/L	MGD	mg/L	mg/L	ml/L	MGD	MGD	MGD	MGD	
02/01/25	3.444	14.0		<0.1	3.140	18.6	8.8	0.2	4.910	10.4	5.0		2.284	4.8	4.0		0.444	0.000	0.133	14.355	0.00
02/02/25	3.462	12.0	14.0	<0.1	3.230	12.2	7.4	0.1	4.43	16.6	6.0	<0.1	2.267	1.3	3.0	<0.1	0.421	0.000	0.136	13.946	0.00
02/03/25	3.470	10.0	14.0	<0.1	3.926	14.3		0.1	4.220	13.8		<0.1	2.323	8.8		<0.1	0.444	0.000	0.057	14.440	0.00
02/04/25	3.652	12.0	12.0	<0.1	4.198	14.8	8.3	0.1	3.710	12.2	9.0	0.1	2.274	1.1	5.0	<0.1	0.441	0.000	0.123	14.398	0.00
02/05/25	3.839	15.0	13.0	<0.1	3.192	16.3	12.0	0.1	3.090	10.6	8.0	0.2	2.157	7.3	5.0	<0.1	0.336	0.000	0.119	12.733	0.00
02/06/25	3.606	15.0	18.0	<0.1	2.993	17.3	7.5	0.1	2.550	10.0	9.0	0.1	2.189	5.0	4.0	<0.1	0.443	0.000	0.079	11.860	0.12
02/07/25	3.452	18.0	13.0	<0.1	3.590	17.4	9.1	0.2	4.570	9.0	6.0	0.1	2.322	4.2	3.0	<0.1	0.443	0.000	0.145	14.522	0.23
02/08/25	3.431	21.0		<0.1	3.579	19.4	10.0	0.1	6.000	10.8	4.0		2.783	3.0	3.0		0.443	0.000	0.000	16.236	0.01
02/09/25	3.446	27.0	12.0	<0.1	3.105	10.2	7.0	0.1	5.150	9.3	6.0	<0.1	2.684	3.2	3.0	<0.1	0.443	0.000	0.000	14.828	0.00
02/10/25	3.470	22.0	13.0	<0.1	2.568	15.5		0.1	5.760	9.3	5.0	<0.1	2.641	1.2	3.0	<0.1	0.443	0.000	0.025	14.907	0.00
02/11/25	3.462	24.0	12.0	<0.1	3.597	13.8	8.9	0.1	4.880	11.3	6.0	<0.1	2.656	0.8	2.0	<0.1	0.443	0.000	0.073	15.111	0.00
02/12/25	3.466	26.0	14.0	<0.1	3.398	11.0	7.0	0.1	6.220	25.4	12.0	0.2	2.732	3.7	9.0	<0.1	0.443	0.000	0.000	16.259	0.43
02/13/25	3.758	40.0	30.0	1.0	4.464	19.0	8.0	0.1	6.900	13.0	7.0	0.6	2.781	6.8	6.0	<0.1	0.443	0.000	0.000	18.346	2.10
02/14/25	3.611	28.0	31.0	<0.1	3.641	17.4	7.8	<0.1	10.330	21.8	10.0	<0.1	3.883	1.6	3.0	<0.1	0.443	0.000	0.000	21.908	0.06
02/15/25	3.881	25.0		<0.1	2.999	9.6	6.0	0.1	7.250	10.0	5.0		3.052	6.9	4.0	<0.1	0.443	0.000	0.000	17.625	0.00
02/16/25	3.901	25.0	15.0	<0.1	3.926	8.1	6.0	0.1	6.180	10.8	7.0	1.2	2.809	2.5	3.0	<0.1	0.443	0.000	0.000	17.259	0.00
02/17/25	4.166	23.0	15.0	<0.1	3.476	14.8		0.1	5.870	13.2	7.0	0.4	2.742	9.3	6.0	<0.1	0.443	0.000	0.000	16.697	0.00
02/18/25	3.741	24.0	23.0	<0.1	4.236	11.0	6.1	<0.1	5.180	10.4	7.0	0.4	2.685	6.1	6.0	<0.1	0.444	0.000	0.000	16.286	0.00
02/19/25	3.353	25.0	22.0	<0.1	3.736	10.8	7.3	0.2	3.150	12.2	5.0	0.3	2.588	6.0	5.0	<0.1	0.443	0.000	0.000	13.270	0.00
02/20/25	3.377	18.0	18.0	<0.1	4.159	23.5	8.6	<0.1	4.050	9.6	7.0	0.3	2.585	1.6	4.0	<0.1	0.443	0.000	0.139	14.753	0.00
02/21/25	3.497	18.0	16.0	<0.1	2.621	24.4	11.3	0.1	4.010	10.8	7.0	0.1	2.251	9.3	6.0	<0.1	0.443	0.000	0.135	12.957	0.00
02/22/25	3.496	20.0		<0.1	4.364	17.0	6.5	0.1	4.150	8.6	4.0		2.222	7.5	4.0		0.443	0.000	0.120	14.795	0.00
02/23/25	3.227	15.0	20.0	<0.1	2.475	10.7	6.7	<0.1	3.840	8.4	6.0	0.1	2.216	2.5	3.0	<0.1	0.443	0.000	0.111	12.312	0.00
02/24/25	3.307	17.0	15.0	<0.1	3.794	12.8		<0.1	3.680	8.9	6.0	<0.1	2.269	4.0	4.0	<0.1	0.444	0.000	0.084	13.578	0.00
02/25/25	3.326	19.0	18.0	<0.1	2.472	13.6	7.2	0.1	2.840	14.2	8.0	0.1	1.974	4.6	5.0	0.1	0.443	0.000	0.147	11.202	0.00
02/26/25	3.303	20.0	18.0	<0.1	2.763	16.5	8.0	<0.1	3.160	10.8	7.0	0.1	2.885	4.1	4.0	<0.1	0.443	0.000	0.140	12.694	0.00
02/27/25	3.372	22.0	20.0	<0.1	3.070	18.8	10.0	0.1	2.830	13.0	8.0	0.1	2.583	4.1	4.0	<0.1	0.443	0.000	0.127	12.425	0.01
02/28/25	3.378	18.0	20.0	<0.1	2.610	13.2	11.5	<0.1	1.830	13.4	9.0	<0.1	2.060	8.0	5.0	<0.1	0.443	0.000	0.129	10.450	0.00
AVG	3.532	20.5	17.3	<0.1	3.404	15.1	8.2	<0.1	4.669	12.1	6.9	<0.2	2.532	4.6	4.3	<0.1	0.438	0.000	0.072	14.648	
TOTAL	98.89				95.32				130.74				70.90				12.28	0.00	2.022	410.15	2.96

South Orange County Wastewater Authority-Aliso Creek Ocean Outfall

REPORT FOR: February 2025
 REPORT DUE: April 1 2025
 SAMPLE SOURCE: Surf zone
 TYPE OF SAMPLE: Grab

REPORT FREQUENCY: Monthly
 EXACT SAMPLE POINTS: As specified in Unified Monitoring Plan
 SAMPLES COLLECTED BY: SOCWA Lab
 SAMPLES ANALYZED BY: SOCWA Lab

Tidal Condition: Low Tide 11:12

Weather: Drizzle

COMMENTS:

STA#	DATE	TIME	Total	Fecal	Entero-	Material of Sewage		Oil & Grease	Odor	Water Color	H2O Temp(F)	Water Condition	Water Outlet	Birds
			Coliform CFU/100ml SM9222B	Coliform CFU/100ml SM9222D	coccus CFU/100ml EPA 1600	Onshore	Offshore							
S3	02/06/25	08:05	<10	<10	<2	None	None	None	None	Green		Slightly Turbid		
S4	02/06/25	10:40	10	<10	<2	None	None	None	None	Green		Clear		
S5	02/06/25	10:18	<10	<10	2	None	None	None	None	Green		Slightly Turbid		
S6	02/06/25	09:59	<10	<10	4	None	None	None	None	Green		Clear		
WEST	02/06/25	09:57	<10	<10	<2	None	None	None	None	Green		Clear		
S7	02/06/25	09:53	<10	<10	10	None	None	None	None	Green		Slightly Turbid		
S8	02/06/25	09:32	10	<10	<2	None	None	None	None	Green		Slightly Turbid		
S9	02/06/25	09:28	200	10	<2	None	None	None	None	Green		Slightly Turbid		
ACM1	02/06/25	09:23	500	40	20	None	None	None	None	Green		Slightly Turbid	Flowing	
S10	02/06/25	09:00	10	10	<2	None	None	None	None	Green		Clear		
S11	02/06/25	08:56	<10	<10	<2	None	None	None	None	Green		Clear		
S12	02/06/25	08:47	<10	100	<2	None	None	None	None	Blue	59	Clear		

RECEIVING WATER LIMITATIONS: Single Sample Maximum - Total coliform density shall not exceed 10,000 per 100ml; Fecal coliform density shall not exceed 400 per 100ml; Enterococcus density shall not exceed 104 per 100ml.

Unified Beach Monitoring

#2

South Orange County Wastewater Authority-Aliso Creek Ocean Outfall

REPORT FOR: February 2025

REPORT FREQUENCY: Monthly

REPORT DUE: April 1, 2025

EXACT SAMPLE POINTS: As specified in Unified Monitoring Plan

SAMPLE SOURCE: Receiving water surf zone

SAMPLES COLLECTED BY: SOCWA Lab

TYPE OF SAMPLE: Grab

SAMPLES ANALYZED BY: SOCWA Lab

Tidal Condition: High Tide 08:02

Weather: Partly Cloudy

COMMENTS:

STA#	DATE	TIME	Total	Fecal	Entero-	Material of Sewage		Oil & Grease	Odor	Water Color	H2O Temp(F)	Water Condition	Water Outlet	Birds
			Coliform CFU/100ml SM9222B	Coliform CFU/100ml SM9222D	coccus CFU/100ml EPA 1600	Onshore	Offshore							
S3	02/11/25	07:33	<10	<10	<2	None	None	None	None	Blue		Clear		30
S4	02/11/25	09:39	30	10	<2	None	None	None	None	Blue		Clear		
S5	02/11/25	09:29	<10	<10	<2	None	None	None	None	Blue		Clear		
S6	02/11/25	09:14	10	<10	<2	None	None	None	None	Blue		Clear		
WEST	02/11/25	09:12	<10	<10	<2	None	None	None	None	Blue		Clear		
S7	02/11/25	09:07	<10	<10	2	None	None	None	None	Blue		Clear		
S8	02/11/25	08:47	<10	<10	<2	None	None	None	None	Blue		Slightly Turbid		
S9	02/11/25	08:44	10	10	6	None	None	None	None	Blue		Slightly Turbid		
ACM1	02/11/25	08:40	<10	20	4	None	None	None	None	Blue		Slightly Turbid		
S10	02/11/25	08:21	<10	<10	<2	None	None	None	None	Blue		Clear		
S11	02/11/25	08:17	10	<10	<2	None	None	None	None	Blue		Clear		
S12	02/11/25	08:10	<10	<10	<2	None	None	None	None	Blue	58	Clear		

RECEIVING WATER LIMITATIONS: Single Sample Maximum - Total coliform density shall not exceed 10,000 per 100ml; Fecal coliform density shall not exceed 400 per 100ml; Enterococcus density shall not exceed 104 per 100m

South Orange County Wastewater Authority-Aliso Creek Ocean Outfall

REPORT FOR: February 2025
 REPORT DUE: April 1, 2025
 SAMPLE SOURCE: Receiving water surf zone
 TYPE OF SAMPLE: Grab

REPORT FREQUENCY: Monthly
 EXACT SAMPLE POINTS: As specified in Unified Monitoring Plan
 SAMPLES COLLECTED BY: SOCWA Lab
 SAMPLES ANALYZED BY: SOCWA Lab

Tidal Condition: Low Tide 10:30

Weather: Clear

COMMENTS:

STA#	DATE	TIME	Total	Fecal	Entero-	Material of Sewage		Oil & Grease	Odor	Water Color	H2O Temp(F)	Water Condition	Water Outlet	Birds
			Coliform CFU/100ml SM9222B	Coliform CFU/100ml SM9222D	coccus CFU/100ml EPA 1600	Onshore	Offshore							
S3	02/20/25	8:06	<10	<10	<2	None	None	None	None	Green		Clear		
S4	02/20/25	10:11	10	<10	<2	None	None	None	None	Brown		Clear		
S5	02/20/25	9:58	<10	<10	4	None	None	None	None	Green		Clear		
S6	02/20/25	9:40	<10	<10	2	None	None	None	None	Green		Clear		
WEST	02/20/25	9:38	<10	<10	<2	None	None	None	None	Green		Clear		
S7	02/20/25	9:32	10	<10	2	None	None	None	None	Green		Clear		
S8	02/20/25	9:22	10	<10	2	None	None	None	None	Green	58	Slightly Turbid		
S9	02/20/25	9:16	20	<10	<2	None	None	None	None	Green		Slightly Turbid		
ACM1	02/20/25	8:55	40	<10	<2	None	None	None	None	Blue		Slightly Turbid		
S10	02/20/25	8:50	<10	<10	<2	None	None	None	None	Blue		Slightly Turbid		
S11	02/20/25	8:45	10	<10	<2	None	None	None	None	Green		Slightly Turbid		
S12	02/20/25	8:38	10	<10	<2	None	None	None	None	Blue		Slightly Turbid		

RECEIVING WATER LIMITATIONS: Single Sample Maximum - Total coliform density shall not exceed 10,000 per 100ml; Fecal coliform density shall not exceed 400 per 100ml; Enterococcus density shall not exceed 104 per 100ml.

South Orange County Wastewater Authority-Aliso Creek Ocean Outfall

REPORT FOR: February 2025
 REPORT DUE: April 1, 2025
 SAMPLE SOURCE: Receiving water surf zone
 TYPE OF SAMPLE: Grab

REPORT FREQUENCY: Monthly
 EXACT SAMPLE POINTS: As specified in Unified Monitoring Plan
 SAMPLES COLLECTED BY: SOCWA Lab
 SAMPLES ANALYZED BY: SOCWA Lab

Tidal Condition: High Tide 6:48

Weather: Clear

COMMENTS:

STA#	DATE	TIME	Total	Fecal	Entero-	Material of Sewage		Oil & Grease	Odor	Water Color	H2O Temp(F)	Water Condition	Water Outlet	Birds
			Coliform CFU/100ml SM9222B	Coliform CFU/100ml SM9222D	coccus CFU/100ml EPA 1600	Onshore	Offshore							
S3	02/25/25	10:50	<10	<10	2	None	None	None	None	Green		Slightly Turbid		
S4	02/25/25	10:30	<10	<10	<2	None	None	None	None	Green		Slightly Turbid		
S5	02/25/25	10:12	<10	<10	<2	None	None	None	None	Green		Slightly Turbid		
S6	02/25/25	9:55	<10	<10	<2	None	None	None	None	Green		Slightly Turbid		
WEST	02/25/25	9:50	10	<10	<2	None	None	None	None	Green		Slightly Turbid		
S7	02/25/25	9:48	<10	20	48	None	None	None	None	Green		Slightly Turbid		
S8	02/25/25	9:32	20	<10	<2	None	None	None	None	Green		Slightly Turbid		
S9	02/25/25	9:30	10	20	2	None	None	None	None	Green	58	Slightly Turbid		100
ACM1	02/25/25	9:25	10	<10	4	None	None	None	None	Green		Slightly Turbid		
S10	02/25/25	9:05	<10	<10	6	None	None	None	None	Green		Slightly Turbid		
S11	02/25/25	9:00	10	<10	8	None	None	None	None	Green		Slightly Turbid		
S12	02/25/25	8:48	<10	<10	<2	None	None	None	None	Green		Slightly Turbid		

RECEIVING WATER LIMITATIONS: Single Sample Maximum - Total coliform density shall not exceed 10,000 per 100ml; Fecal coliform density shall not exceed 400 per 100ml; Enterococcus density shall not exceed 104 per 100ml.

Unified Beach Water Quality Sample Station Map – Aliso Creek Ocean Outfall



Aliso Creek Ocean Outfall

Unified Beach Water Quality Monitoring Stations

SOCWA's NPDES discharge permit requires participation in the South Orange County Unified Beach Water Quality Monitoring Program. The monitoring stations below are tested by SOCWA at least once per week for Total and Fecal Coliform and Enterococcus Bacteria.

Station	Location
S3	Three Arch Bay Beach; 10,000' down-coast from ACOO
S4	Ninth Street-1000 Steps; 5,000' down-coast from ACOO
S5	Laguna Lido Beach; 4,000 down-coast from ACOO
West	West Street Drain; 2,000' down-coast from ACOO
S6	Table Rock Beach; 3,000' down-coast from ACOO
S7	Camel Point Beach; 2,000' down-coast from ACOO
S8	Aliso Beach south; 1,000' down-coast from ACOO
S9	Aliso Beach middle; at ACOO
ACM1	Aliso Beach at Aliso Creek Outlet
S10	Aliso Beach north; 1,000' up-coast of ACOO
S11	Treasure Island Beach; 2,000' up-coast of ACOC
S12	Goff Island Beach; 3,000' up-coast of ACOO

MONITORING REPORT

Off Shore Stations

South Orange County Wastewater Authority

DISCHARGE: Aliso Creek Ocean Outfall

Report For: February 2025

Report Frequency: Monthly

Report Due: April 1, 2025

Sample Source: Receiving water, nearshore and offshore

Sampling Frequency: Monthly

Exact Sample Points: As specified in permit

Type of Sample: Grab

Samples Collected By: Seaventures/SOCWA staff

Samples Analyzed By: SOCWA Lab

Comments:

Low Tide 8:18

Sta No.	Sample Depth	Sample Date	Total Coliform CFU/100ml SM9222B	Fecal Coliform CFU/100ml SM9222D	Enterococcus CFU/100ml EPA 1600	Sample Time	Oil & Grease	Sewage Debris	0 - None 1 - Mild 2 - Moderate 3 - Severe
A-1	Surface	02/04/25	<2	4	<2	8:08	0	0	
A-1	Mid depth	02/04/25	10	<10	<10				
A-2	Surface	02/04/25	<2	<2	<2	8:02	0	0	
A-2	Mid depth	02/04/25	<10	10	<10				
A-3	Surface	02/04/25	<2	6	<2	8:19	0	0	
A-3	Mid depth	02/04/25	20	<10	<10				
A-4	Surface	02/04/25	2	<2	<2	8:25	0	0	
A-4	Mid depth	02/04/25	20	50	10				
A-5	Surface	02/04/25	<2	4	<2	8:14	0	0	
A-5	Mid depth	02/04/25	30	30	<10				
B-1	Surface	02/04/25	<2	<2	<2	7:50	0	0	
B-1	Mid depth	02/04/25	<10	10	<10				
B-2	Surface	02/04/25	<2	<2	<2	8:33	0	0	
B-2	Mid depth	02/04/25	20	10	10				
N1	Surface	02/04/25	10	4	<2	8:51	0	0	
N2	Surface	02/04/25	4	<2	<2	8:49	0	0	
N3	Surface	02/04/25	<2	2	<2	8:47	0	0	
N4	Surface	02/04/25	8	2	<2	8:46	0	0	
N5	Surface	02/04/25	10	4	2	8:49	0	0	
N6	Surface	02/04/25	8	<2	<2	8:43	0	0	
N7	Surface	02/04/25	2	2	2	8:39	0	0	

REQUIREMENT: (1) Floating particulates and grease and oil shall not be visible. (2) The discharge of waste shall not cause aesthetically undesirable discoloration of the ocean surface.

Receiving Water Limitations: (1)30-Day geometric mean of fecal coliform density not to exceed 200CFU/100 mL

calculated based on the five most recent samples from each site (2)single sample max not to exceed 400 CFU/100mL

(3) Enterococcus 6-week rolling geometric mean not to exceed 30 CFU/100 mL, calculated weekly. (4) Statistical threshold value (STV)

of 110 CFU/100 mL for enterococcus not to be exceeded by more than 10% of samples collected in a calendar month, calculated in a static manner

**Compliance Summary Report
Aliso Creek Ocean Outfall February 2025**

ACOO Permit Order No. R9-2022-0006							
Agency - Facility	Violation Date	Constituent	Effluent Limit Violation	Units	Permit Limit	Reported Value	Potential Fine
There were no water quality violations during this reporting period.							



SOCWA and MEMBER AGENCY FACILITIES
ACOO Spill / Overflow Report Log - February 2025 Order
No. R9-2022-0006 ~ NPDES Permit No. CA0107611

Reporting Agency	Responsible Agency	Estimated Volume (Gallons)	Type of Discharge	Location/Comments	Receiving Waters	Date Reported To State	Date Resolved
				No Spills During this Monitoring Period			

SAN JUAN CREEK OCEAN OUTFALL MONITORING REPORT

February 2025

DATE	J.B. LATHAM FACILITY				SAN CLEMENTE WRP				SMWD CHIQUITA WRP				3-A PLANT				CSJC	SCWD	SJCOO	Rain
	FLOW MGD	TSS mg/L	cBOD mg/L	SS ml/L	FLOW MGD	TSS mg/L	cBOD mg/L	SS ml/L	FLOW MGD	TSS mg/L	cBOD mg/L	SS ml/L	FLOW MGD	TSS mg/L	cBOD mg/L	SS ml/L	FLOW MGD	FLOW MGD	FLOW MGD	Fall inches
02/01/25	7.870	7.8	6.0		2.785				5.570	2.6	6.0	<0.1	1.582				0.520	0.171	19.720	0.00
02/02/25	8.120	8.5	6.7	<0.1	3.086		4.0		4.828	2.9	>25.2	<0.1	1.634				0.520	0.174	20.140	0.00
02/03/25	8.230	12.2	10.2	<0.1	3.419	7.8	7.0	<0.1	1.390	4.1	5.0	<0.1	1.611	2.6	3.3	<0.1	0.520	0.173	19.860	0.00
02/04/25	8.060	8.1	5.5	<0.1	2.655	8.5	6.0	<0.1	0.000				1.547	6.2	4.1	<0.1	0.520	0.171	14.350	0.00
02/05/25	7.820	9.8	6.8	<0.1	2.318	8.6	9.0	<0.1	0.020	5.5	5.2	<0.1	1.513	3.2	3.0	<0.1	0.520	0.173	13.340	0.00
02/06/25	7.760	11.8	10.4	<0.1	3.722	8.0	9.0	<0.1	0.008	6.0	4.7	<0.1	1.570	6.2	5.2	<0.1	0.510	0.175	13.350	0.12
02/07/25	7.780	14.4	11.2	0.2	3.204	2.0	6.0	<0.1	0.000				1.554	7.6	5.9	<0.1	0.470	0.170	13.270	0.23
02/08/25	7.860	13.3	12.2		2.689				0.000				1.620				0.540	0.174	13.580	0.01
02/09/25	7.890	10.9	9.6	<0.1	2.941		7.0		0.000				1.627				0.540	0.173	13.690	0.00
02/10/25	7.960	14.1	13.1	<0.1	3.109	8.2	6.0	<0.1	0.000				1.599	9.8	7.4	<0.1	0.540	0.170	13.820	0.00
02/11/25	7.790	10.2	9.0	<0.1	2.819	8.4	8.0	<0.1	0.000				1.549	5.0	4.2	<0.1	0.540	0.172	13.550	0.00
02/12/25	7.750	10.5	8.0	<0.1	2.556	9.4	11.0	<0.1	0.013	5.4	2.7	<0.1	1.706	2.4	3.6	<0.1	0.540	0.170	13.070	0.43
02/13/25	8.850	7.3	6.7	<0.1	3.503	5.8	6.0	<0.1	0.747	3.2	2.0	<0.1	2.434	5.0	4.6	<0.1	0.540	0.173	14.460	2.10
02/14/25	12.440	13.6	13.4	<0.1	4.188	5.8	5.0	<0.1	0.016	13.0	4.9	<0.1	1.880	5.8	4.5	<0.1	0.540	0.173	21.610	0.06
02/15/25	9.470	7.4	6.1		3.276				0.000				1.642				0.540	0.170	15.660	0.00
02/16/25	8.840	4.7	7.1	<0.1	3.355				0.000				1.561				0.540	0.172	14.510	0.00
02/17/25	8.470	7.5	6.4	<0.1	3.256	8.2	5.0	0.1	0.000				1.685	7.0	5.9	<0.1	0.540	0.170	13.980	0.00
02/18/25	8.780	7.5	6.2	<0.1	3.179	7.4	6.0	<0.1	0.000				1.556	8.4	6.4	<0.1	0.540	0.172	14.580	0.00
02/19/25	8.180	8.1	5.0	<0.1	2.952	7.6	7.0	<0.1	0.009	3.0	2.9	<0.1	1.599	5.4	4.8	<0.1	0.530	0.175	13.880	0.00
02/20/25	8.060	7.4	7.4	<0.1	3.196	8.4	8.0	<0.1	0.000				1.535	3.8	3.5	<0.1	0.320	0.170	13.580	0.00
02/21/25	8.110	5.9	5.7	<0.1	3.397	5.5	5.0	<0.1	0.000				1.584	7.4	2.1	<0.1	0.540	0.173	13.930	0.00
02/22/25	7.990	6.0	5.5		3.051				0.000				1.568				0.540	0.173	13.810	0.00
02/23/25	8.120	6.5	6.5	<0.1	3.224		7.0		0.000				1.600				0.540	0.171	14.060	0.00
02/24/25	8.310	8.4	8.0	<0.1	3.781	6.2	4.0	0.1	0.000				1.565	3.0	2.4	<0.1	0.230	0.174	14.620	0.00
02/25/25	8.070	7.3	6.3	<0.1	3.339	7.5	5.0	0.1	0.000				1.602	5.6	4.4	<0.1	0.000	0.170	13.780	0.00
02/26/25	7.980	7.2	7.3	0.1	3.094	8.8	7.0	<0.1	0.013	3.6	2.6	<0.1	1.529	4.6	4.1	<0.1	0.000	0.172	13.570	0.00
02/27/25	7.880	8.7	8.0	0.1	3.041	9.6	9.0	<0.1	0.000				1.181	3.6	3.9	<0.1	0.000	0.175	13.370	0.01
02/28/25	8.180	8.4	8.7	<0.1	3.133	5.3	4.0	0.1	0.000				1.025	5.2	4.8	<0.1	0.140	0.170	12.730	0.00
AVG	8.308	9.1	8.0	<0.1	3.152	7.4	6.6	<0.1	0.451	4.9	6.1	<0.1	1.595	5.4	4.4	<0.1	0.441	0.172	14.781	
TOTAL	232.620				88.268				12.614				44.658				12.360	4.819	413.870	2.96

South Orange County Wastewater Authority-San Juan Creek Ocean Outfall

REPORT FOR: February 2025
 REPORT DUE: April 1, 2025
 SAMPLE SOURCE: Receiving water surf zone
 TYPE OF SAMPLE: Grab

REPORT FREQUENCY: Monthly
 EXACT SAMPLE POINTS: As specified in Unified Monitoring Plan
 SAMPLES COLLECTED BY: SOCWA Lab
 SAMPLES ANALYZED BY: SOCWA Lab

Tidal Condition: Low Tide 6:29

Weather: Overcast

COMMENTS:

STATION #	DATE	TIME	Total Coliform	Fecal Coliform	Entero-coccus	Material of Sewage Origin		Oil & Grease	Odor	Water Color	H2O Temp(F)	Water Condition	Water Outlet	Birds
			CFU/100ml SM9222B	CFU/100ml SM9222D	CFU/100ml EPA 1600	Onshore	Offshore							
S0	02/03/25	8:23	80	<20	10	None	None	None	None	Green	54	Turbid		
S1	02/03/25	8:48	<20	<20	<2	None	None	None	None	Brown		Turbid		
S2	02/03/25	9:35	100	20	4	None	None	None	None	Green		Turbid		
DSB5	02/03/25	9:51	220	20	22	None	None	None	None	Brown		Slightly Turbid		
S3	02/03/25	8:51	<20	<20	<2	None	None	None	None	Green		Turbid		
DSB4	02/03/25	8:54	20	<20	<2	None	None	None	None	Green		Turbid		
S5	02/03/25	9:06	<20	<20	<2	None	None	None	None	Brown		Turbid		
DSB1	02/03/25	9:14	<20	<20	<2	None	None	None	None	Brown		Slightly Turbid		
SJC1	02/03/25	8:28	1200	240	60	None	None	None	None	Green		Turbid	Flowing	

RECEIVING WATER LIMITATIONS: Single Sample Maximum - Total coliform density shall not exceed 10,000 per 100ml; Fecal coliform density shall not exceed 400 per 100ml; Enterococcus density shall not exceed 104 per 100ml.

South Orange County Wastewater Authority-San Juan Creek Ocean Outfall

REPORT FOR: February 2025
 REPORT DUE: April 1, 2025
 SAMPLE SOURCE: Receiving water surf zone
 TYPE OF SAMPLE: Grab

REPORT FREQUENCY: Monthly
 EXACT SAMPLE POINTS: As specified in Unified Monitoring Plan
 SAMPLES COLLECTED BY: SOCWA Lab
 SAMPLES ANALYZED BY: SOCWA Lab

Tidal Condition: High Tide 7:49

Weather: Partly Cloudy

COMMENTS:

STATION #	DATE	TIME	Total Coliform	Fecal Coliform	Entero-coccus	Material of Sewage Origin		Oil & Grease	Odor	Water Color	H2O Temp(F)	Water Condition	Water Outlet	Birds
			CFU/100ml SM9222B	CFU/100ml SM9222D	CFU/100ml EPA 1600	Onshore	Offshore	None	None	None	None	None	None	None
S0	02/11/25	8:37	40	<20	2	None	None	None	None	Green		Turbid		
S1	02/11/25	8:58	<20	<20	<2	None	None	None	None	Brown		Slightly Turbid		
S2	02/11/25	9:44	40	20	<2	None	None	None	None	Green		Slightly Turbid		
DSB5	02/11/25	9:58	300	<20	<2	None	None	None	None	Green	59	Slightly Turbid		
S3	02/11/25	9:01	<20	20	<2	None	None	None	None	Green		Slightly Turbid		
DSB4	02/11/25	9:04	<20	<20	20	None	None	None	None	Green		Slightly Turbid		
S5	02/11/25	9:17	<20	<20	2	None	None	None	None	Brown		Slightly Turbid		
DSB1	02/11/25	9:24	<20	<20	<2	None	None	None	None	Green		Slightly Turbid		
SJC1	02/11/25	8:42	<20	20	<10	None	None	None	None	Green		Turbid	Flowing	

RECEIVING WATER LIMITATIONS: Single Sample Maximum - Total coliform density shall not exceed 10,000 per 100ml; Fecal coliform density shall not exceed 400 per 100ml; Enterococcus density shall not exceed 104 per 100ml.

South Orange County Wastewater Authority-San Juan Creek Ocean Outfall

REPORT FOR: February 2025
 REPORT DUE: April 1, 2025
 SAMPLE SOURCE: Receiving water surf zone
 TYPE OF SAMPLE: Grab

REPORT FREQUENCY: Monthly
 EXACT SAMPLE POINTS: As specified in Unified Monitoring Plan
 SAMPLES COLLECTED BY: SOCWA Lab
 SAMPLES ANALYZED BY: SOCWA Lab

Tidal Condition: High Tide 12:06

Weather: Clear

COMMENTS:

STATION #	DATE	TIME	Total Coliform	Fecal Coliform	Entero-coccus	Material of Sewage Origin		Oil & Grease		Water Color	H2O Temp(F)	Water Condition	Water Outlet	Birds
			CFU/100ml SM9222B	CFU/100ml SM9222D	CFU/100ml EPA 1600	Onshore	Offshore	Grease	Odor					
S0	02/18/25	09:43	1400	420	300	None	None	None	None	Brown		Turbid		
S1	02/18/25	09:38	900	200	100	None	None	None	None	Brown		Turbid		
S2	02/18/25	10:04	400	40	60	None	None	None	None	Brown		Turbid		
DSB5	02/18/25	10:18	3000	200	100	None	None	None	None	Brown		Turbid	Flowing	
S3	02/18/25	09:29	240	<20	80	None	None	None	None	Brown		Turbid		
DSB4	02/18/25	09:27	260	40	80	None	None	None	None	Brown		Turbid		
S5	02/18/25	09:15	200	<20	40	None	None	None	None	Brown	58	Turbid		
DSB1	02/18/25	09:08	200	20	40	None	None	None	None	Brown		Turbid		
SJC1	02/18/25	09:47	1200	200	100	None	None	None	None	Brown		Turbid	Flowing	

RECEIVING WATER LIMITATIONS: Single Sample Maximum - Total coliform density shall not exceed 10,000 per 100ml; Fecal coliform density shall not exceed 400 per 100ml; Enterococcus density shall not exceed 104 per 100ml.

South Orange County Wastewater Authority-San Juan Creek Ocean Outfall

REPORT FOR: February 2025
 REPORT DUE: April 1, 2025
 SAMPLE SOURCE: Receiving water surf zone
 TYPE OF SAMPLE: Grab

REPORT FREQUENCY: Monthly
 EXACT SAMPLE POINTS: As specified in Unified Monitoring Plan
 SAMPLES COLLECTED BY: SOCWA Lab
 SAMPLES ANALYZED BY: SOCWA Lab

Tidal Condition: High Tide 6:54
 Weather: Clear
 COMMENTS:

STATION #	DATE	TIME	Total	Fecal	Entero-	Material of Sewage		Oil &		Water	H2O	Water	Water	Birds	
			Coliform	Coliform	coccus	Onshore	Offshore	Grease	Odor	Color	Temp(F)	Condition	Outlet		
			CFU/100ml	CFU/100ml	CFU/100ml	SM9222B	SM9222D	EPA 1600							
S0	02/25/25	9:03	300	60	92				None	None	None	None	Green	Slightly Turbid	
S1	02/25/25	9:00	600	240	120				None	None	None	None	Green	Slightly Turbid	
S2	02/25/25	8:27	1400	100	720				None	None	None	None	Brown	Turbid	
DSB5	02/25/25	8:21	>=8000	540	1700				None	None	None	None	Brown	Turbid	Flowing
S3	02/25/25	9:17	40	40	40				None	None	None	None	Green	Slightly Turbid	
DSB4	02/25/25	9:20	60	20	42				None	None	None	None	Green	Slightly Turbid	
S5	02/25/25	9:28	100	40	44				None	None	None	None	Green	Slightly Turbid	
DSB1	02/25/25	9:31	20	40	34				None	None	None	None	Green	Slightly Turbid	
SJC1	02/25/25	8:54	600	320	110				None	None	None	None	Brown	Turbid	Flowing

RECEIVING WATER LIMITATIONS: Single Sample Maximum - Total coliform density shall not exceed 10,000 per 100ml; Fecal coliform density shall not exceed 400 per 100ml; Enterococcus density shall not exceed 104 per 100ml.



San Juan Creek Ocean Outfall

Unified Beach Water Quality Monitoring Stations

SOCWA's NPDES discharge permit requires participation in the South Orange County Unified Beach Water Quality Monitoring Program. The monitoring stations below are tested by SOCWA at least once per week for Total and Fecal Coliform and Enterococcus Bacteria.

Station	Location
DSB 5	Doheny Beach – North Creek Outlet 1500' up-coast from SJCOO
S2	Doheny Beach- Midway between Jetty and San Juan Creek
SJC1	San Juan Creek Mouth – up-coast from SJCOO
S0	Doheny Beach at Outfall; surf line over SJCOO
S1	Doheny Beach Campground; 1,000' down-coast from SJCOO
DSB 4	Doheny State Beach; 1,900' down-coast from SJCOO
S3	South Day Use; 2000' down-coast from SJCOO
S5	Doheny Beach near overpass; 3000' down-coast from SJCOO
DSB 1	End of Doheny State Beach; 3500' down-coast from SJCOO

MONITORING REPORT

Offshore

South Orange County Wastewater Authority

DISCHARGE: San Juan Creek Ocean Outfall

Report For: February 2025

Report Frequency: Monthly

Report Due: April 1, 2025

Sample Source: Receiving water, nearshore and offshore

Sampling Frequency: Monthly

Exact Sample Points: As specified in permit

Type of Sample: Grab

Samples Collected By: Seaventures/SOCWA staff

Low tide at 8:16

Samples Analyzed By: SOCWA Lab

Comments:

Station No.	Sample Depth	Sample Date	Total Coliform CFU/100ml SM9222B	Fecal Coliform CFU/100ml SM9222D	Enterococcus CFU/100ml EPA 1600	Sample Time	Oil & Grease	Sewage Debris	
A-1	Surface	02/04/25	<2	4	<2	10:00	0	0	0 - None
A-1	Mid depth	02/04/25	20	10	<10				1 - Mild
A-2	Surface	02/04/25	<2	2	<2	9:56	0	0	2 - Moderate
A-2	Mid depth	02/04/25	30	<10	<10				3 - Severe
A-3	Surface	02/04/25	4	<2	<2	10:09	0	0	
A-3	Mid depth	02/04/25	10	<10	<10				
A-4	Surface	02/04/25	2	6	<2	10:15	0	0	
A-4	Mid depth	02/04/25	10	10	<10				
A-5	Surface	02/04/25	20	<2	<2	10:05	0	0	
A-5	Mid depth	02/04/25	10	<10	<10				
B-1	Surface	02/04/25	8	2	<2	9:48	0	0	
B-1	Mid depth	02/04/25	30	20	<10				
B-2	Surface	02/04/25	4	8	<2	10:23	0	0	
B-2	Mid depth	02/04/25	10	10	<10				
N1	Surface	02/04/25	4	4	<2	9:34	0	0	
N2	Surface	02/04/25	10	10	<2	9:31	0	0	
N3	Surface	02/04/25	4	<2	<2	9:29	0	0	
N4	Surface	02/04/25	6	4	2	9:24	0	0	
N5	Surface	02/04/25	6	8	<2	9:21	0	0	
N6	Surface	02/04/25	8	2	<2	9:18	0	0	

REQUIREMENT: (1) Floating particulates and grease and oil shall not be visible. (2) The discharge of waste shall not cause aesthetically undesirable discoloration of the ocean surface.

Receiving Water Limitations: (1)30-Day geometric mean of fecal coliform density not to exceed 200CFU/100 mL calculated based on the five most recent samples from each site (2)single sample max not to exceed 400 CFU/100mL (3) Enterococcus 6-week rolling geometric mean not to exceed 30 CFU/100 mL, calculated weekly. (4) Statistical threshold value (STV) of 110 CFU/100 mL for enterococcus not to be exceeded by more than 10% of samples collected in a calendar month, calculated in a static manner

Compliance Summary Report
San Juan Creek Ocean Outfall February 2025

SJCOO Permit Order No. R9-2025-0001

Agency	Violation Date	Constituent	Effluent Limit Violation	Units	Permit Limit	Reported Value	Potential Fine
There were no water quality violations during this reporting period.							



SOCWA and MEMBER AGENCY FACILITIES
SJCOO Spill / Overflow Report Log - February 2025
Order No. R9-2025-0001 ~ NPDES Permit No. CA0107417

Reporting Agency	Responsible Agency	Estimated Volume (Gallons)	Type of Discharge	Location/Comments	Receiving Waters	Date Reported To State	Date Resolved
No spills during this monitoring period.							

Waste Discharge Requirement Order 97 - 52

Agency - Facility	Violation Date	Constituent	Effluent Limit Violation	Units	Permit Limit	Reported Value	Remarks
MNWD - RTP	1/7/2025	TDS	12 month	mg/L	1000	1212	
MNWD - RTP	1/7/2025	Manganese	12-Month	mg/L	0.05	0.13	
MNWD - RTP	1/7/2025	Manganese	Daily Maximum	mg/L	0.06	0.07	
SOCWA - CTP	1/7/2025	Manganese	12-Month	mg/L	0.05	0.09	
MNWD - 3A	10/2/2024	TDS	12 month	mg/L	1000	1213	Offline
MNWD - 3A	10/2/2024	Manganese	12 month	mg/L	0.05	0.10	Offline
SMWD-NWRP	1/15/2025	TDS	Daily Maximum	mg/L	1000	1200	
SOCWA - CTP	2/4/2025	Manganese	Daily Maximum	mg/L	0.06	0.08	
SOCWA - CTP	2/4/2025	Manganese	12 month	mg/L	0.05	0.09	
MNWD - RTP	2/4/2025	Manganese	Daily Maximum	mg/L	0.06	0.15	
MNWD - RTP	2/4/2025	Manganese	12 month	mg/L	0.05	0.13	
MNWD - RTP	2/4/2025	TDS	12 month	mg/L	1000	1189	
MNWD - 3A	10/2/2024	TDS	12 month	mg/L	1000	1213	Offline
MNWD - 3A	10/2/2024	Manganese	12 month	mg/L	0.05	0.10	Offline

Recycled Water Report

SOUTH ORANGE COUNTY WASTEWATER AUTHORITY

QUARTERLY RECYCLED WATER MONITORING

Monitoring Period Ending: Feb 28, 2025

Constituent	Units	12-month Avg Maximum Permit Limit	TCWD 12-month Average	SMWD Oso 12-month Average	SMWD Chiquita 12-month Average	SMWD Nichols 12-month Average	MNWD-3A 12-month Average	MNWD-RTP 12-month Average	SCWD-CTP 12-month Average

TDS	mg/L	1000	932		931	992	1,213	1,189	1,028
Chloride	mg/L	375	210		247	290	239	226	245
Sulfate	mg/L	400	284		237	214	360	330	310
Sodium	mg/L	None	56		175	208		184	186
Alkalinity	mg/L	None	-	-	-	-		236	198
Adjusted SAR	Ratio	None	4.55		5.05	5.72	3.17	3.96	4.22
Iron	mg/L	0.3	0.041		0.145	0.171	0.20	0.208	0.152
Manganese	mg/L	0.05	0.005		0.040	0.020	0.10	0.133	0.088
MBAS	mg/L	0.5	ND0.06		ND0.09	ND0.11	0.00	<0.12	<0.12
Boron	mg/L	0.67	0.280		0.243	0.378	0.30	0.286	0.27
Fluoride	mg/L	None	0.64		0.61	0.71	0.77	0.76	0.61
Total Organic Carbon	mg/L	None	6.1		11.1	10.3	3.0	9.9	7.8

*** The CTP 12-month permit limits are listed below:

TDS 1200 mg/L
Chloride 400 mg/L
Sulfate 500 mg/L

SOCWA Service Area
Recycled Water Production (ac-ft)
2025

Agency	Facility or Region	Jan '25	Feb '25	Mar '25	Apr '25	May '25	Jun '25	Jul '25	Aug '25	Sep '25	Oct '25	Nov '25	Dec '25	Annual Totals
CSJC 1	3-A Plant/MNWD	0.00	0.00											0.00
CSJC 2	Chiquita/SMWD	12.90	1.91											14.81
CSJC 3	Non-Domestic Wel	30.43	14.44											44.87
ETWD	Region 8	76.42	28.25											104.67
IRWD														
4	IRWD - 8	135.30	38.33											173.63
4	IRWD - 9	53.53	18.46											71.99
SCWD	SOCWA CTP	54.89	19.84											95.06
MNWD	JRP	449.87	260.06											709.93
	3-A Plant	0.00	0.00											0.00
5	CTP	5.27	-4.21											1.07
SMWD	Oso Creek													
	Chiquita	362.93	426.67											789.59
	Nichols	1.73	1.49											3.22
TCWD	RRWRP	37.50	35.59											73.09
TOTALS		1,220.8	840.84											2,081.93

- 1 Denotes transfer of recycled water from MNWD (3A Plant) for use in the CSJC service area. Not counted as additional production.
 - 2 Denotes recycled water purchased from SMWD Chiquita-WRP used in the CSJC service area. Not counted as additional production.
 - 3 Denotes nondomestic groundwater produced from wells used for landscape irrigation.
 - 4 IRWD production is from recycled water production, nonpotable water wells, and surface water impoundments
 - 5 Denotes transfer of recycled water from SCWD (SOCWA CTP) for use in the MNWD service area. Not counted as additional production.
- Note: All of ETWD reclaimed water produced and used in Region 8.
NR = No Report

Pretreatment Report

Agenda Item

5.E.

Legal Counsel Review: No

Meeting Date: April 3, 2025

TO: Board of Directors

FROM: Amber Boone, General Manager

STAFF CONTACT: Katie Greenwood, Source Control Manager

SUBJECT: Monthly Pretreatment Report – February and March 2025
San Juan Creek Ocean Outfall
NPDES Permit #CA0107417 Order # R9-2022-0005
Aliso Creek Ocean Outfall
NPDES Permit #CA0107611 Order # R9-2022-0006

Summary of Program Activities

Staff continues to utilize submitted will serve notices and business licensing data to identify industrial users (IUs) and update each member agency (MA) industrial waste survey (IWS) spreadsheet. Please see “Summary of IWS Activities” table below.

Staff will resume public outreach efforts, as detailed in each pretreatment annual report, starting with the City of San Clemente’s Earth Day event in April 2025 and the SMWD’s Water Festival in June 2025. Member agency staff are encouraged to reach out if they are interested in agency participation in any upcoming outreach activities.

Permit Related Activities

The following Wastewater Discharge (WD) Permits, Special Wastewater Discharge (SWD) Permits, Nuisance Water-Special Wastewater Discharge (NSWD) Permits, Non-Industrial Wastewater Discharge (NIWD) forms, and BMP letters were issued or are in the process of being drafted for issuance:

SMWD – Mission Riding Park - Staff issued WD Permit #SMWD-2-003 on December 16, 2024, to allow wastewater discharge by permanent connection to the sewer from six horse wash rack stations. This connection is the only active permit for the site, and no other sewer discharges from the site are allowed. The first self-monitoring report (SMR) is for March and April 2025 and is due to SOCWA by May 20, 2025. Staff is working with the site to source equipment in compliance with permit provisions.

SOCWA – SWD Permit No. SOCWA-4-006-05-24 - On February 24, 2025, IRWD re-submitted a dewatering SWD Permit Application with new dates for groundwater discharges associated with the Lake Forest Woods Sewer Improvements project. Staff is drafting a SWD Permit to be issued mid-April.

CSC – Renewal WD Permit No. CSC-2-010 – Reynard Corporation – Staff issued a renewal non-Significant Categorical Industrial User (NSCIU) WD Permit on March 17, 2025, to allow Reynard

to continue to discharge no more than 100 gpd of wastewater subject to metal finishing rules under 40 CFR Part 433. Reynard is a lens and custom optics manufacturer.

MNWD – WD Permit No. MNWD-4-010-03-26 – Arco Service Station – On March 25, 2025, staff issued a permit modification letter modifying the permit so that self-monitoring reports (SMRs) are only due if discharge to the sewer system commences again. The groundwater remediation site is in process of being closed. Staff received copy of and retained a letter on-file dated March 20, 2025, from Water Resource Control Board staff which confirms the process for site closure and states a remediation system is no longer needed. No discharge to the sewer has occurred since October 2024.

Trainings and Committee Meetings Attended

SOCWA staff continue to attend monthly OC Strike Force Meetings to receive and share legal information related to environmental cases and incidents throughout the county.

On March 21, 2025, staff attended the CWEA SARBS strategic meeting as the acting P3S Committee Chair.

On March 26, 2025, staff participated in the Clean Water SoCal committee day in-person in Irvine as the presenting pretreatment committee co-chair.

Inspections

ETWD - On March 5, 2025, staff assisted ETWD staff in inspecting Gamecraft Brewery. The inspection yielded no major findings and addressed areas for improvement. SOCWA staff created laminated BMP posters specific to breweries, wineries, and distillers and is distributing them as related sites are inspected.

CSC – On March 6, 2025, staff conducted a pre-permit renewal inspection of the Reynard Corporation. The inspection yielded no major findings

MNWD – On March 12, 2025, staff inspected Spyglass Pharma to verify information submitted in a wastewater discharge permit application. Inspection findings confirmed that the facility does not need to be permitted at present.

SMWD – On March 19, 2025, staff assisted SMWD in initial inspection of an equestrian center in San Juan Capistrano. Inspection findings are pending.

MNWD – On March 18, 2025, staff inspected Jewelry by Angelo to determine if metal repair process requires permitting under metal finishing rules. Findings concluded a permit is not needed at present.

Enforcement

MNWD- On February 28, 2025, staff issued a warning notice of non-compliance (WNON) to Mission Viejo Country Club (MVCC), SWD Permit No. MNWD-4-013 for failing to collect a sampling in January 2025. Site staff collected two samples in February 2025, due to SOCWA by March 20, 2025. All data during the February reporting period was compliant. SOCWA considers this enforcement action resolved.

Summary of IWS Activities in SOCWA's Service Area - YTD through March 25, 2025

<u>MA IUs</u>	<u>Events</u>	<u>Permits</u>	<u>NIWD</u>	<u>BMPs</u>	<u>FSEs</u>	<u>OSEs</u>	<u>DSEs</u>	<u>Closed</u>	<u>Enforcement</u>	<u>Total IUs</u>
CLB (S)	0	2	2	5	8	110	15	0	0	143
CSC (S)	8	10	35	18	189	1263	38	0	0	1553
CSJC (S)	8	0	27	58	141	1698	30	0	0	1954
ETWD (M)	5	0	88	0	261	137	50	1	0	492
EBSD (U)	0	1	0	0	0	0	0	0	0	1
IRWD (S)	1	5	51	21	63	915	18	0	0	1073
MNWD (S)	12	4	120	38	655	2143	152	5	1	3112
SMWD (S)	7	9	19	20	215	846	52	3	1	1161
SCWD (S)	0	7	33	7	148	186	15	0	0	397
TCWD (S)	0	0	11	0	7	33	2	0	0	51
SOCWA (S)	0	6	1	0	0	0		0	0	6
Totals	41	44	387	167	1687	7331	372	9	2	9943

(S) = SOCWA conducts PT program
 (M) = MA conducts PT program /w SOCWA
 (U) = Urban Diversion Only

NIWD = Non-industrial Waste Discharger
 BMP = Best Management Practices
 FSE = Food Service Establishment

YTD = Year to Date
 OSE = Other Surveyed Establishment
 DSE = Dental Surveyed Establishment

Agenda Item

6.F.

Board of Directors Meeting

Meeting Date: April 3, 2025

TO: Board of Directors
FROM: Amber Boone, General Manager
STAFF CONTACT: Roni Grant, Capital Improvement Program Manager
SUBJECT: Capital Improvement Program Status Report (March)

The status of the SOCWA Capital Improvement Program is presented in the tables on the following pages. Below are updates for the previous month for the major construction projects currently underway at SOCWA facilities.

J.B. Latham Treatment Plant Scum Line Replacement

Replacement of the scum line at Aeration Basin No. 1 in Plant 1

Construction is currently in progress.

J.B. Latham Treatment Plant Electrical System Upgrades

Replacement of MCC-M and Plant 1 Standby Generator

Pre-Purchasing of MCC and Plant 1 generator is underway.

J.B. Latham Treatment Plant and Coastal Treatment Plant SCADA System Upgrades

SCADA system upgrades at the two treatment plants.

Upgrades started earlier this year and are near completion.

Coastal Treatment Plant Diffusers Upgrades

Replacement of diffusers and air headers in the aeration basins

The contractor substantially completed the contract work, and working out final punch list items.

Coastal Treatment Plant Aeration Deck Grating Replacement

Improvements to the aeration deck grating, including concrete repair and grating supports

Construction is currently in progress.

CTP West Primary and Secondary Scum Skimming System

Replacement to the scum skimmers, launders and weirs

Pre-Purchasing of scum skimmers, launders, and weirs is currently in progress.

Coastal Treatment Plant Auxiliary Blower Building Roof Replacement
Improvements to the Auxiliary Blower Building Roof

Construction was completed with no change orders.

Coastal Treatment Plant Personnel Building Sewer Rehabilitation
Improvements to the sewer system in the Personnel Building

Construction is currently in progress.

Recommended Action: Information Item.

Jul - Sep	Oct - Dec	Jan - Mar	Apr - Jun	Jul - Sep	Oct - Dec	Jan - Mar	Apr - Jun
-----------	-----------	-----------	-----------	-----------	-----------	-----------	-----------

SOCWA CIP Workplan

Project Number	Project Name	Project Budget	Status	FY 2024/2025				FY 2025/2026			
				Q1	Q2	Q3	Q4	Q1	Q2	Q3	Q4
PC 2 - J.B. Latham Treatment Plant											
32231C	Process Water Repiping	\$ 50,000	Design underway	D	D	B&A	C				
3215/3252	MCC M and Plant 1 Generator Replacement	\$ 2,623,000	Pre-procurement and design underway	D	D	B&A	C	C	C	C	C
3285	Main Plant Drain Line Reconstruction	\$ 165,736	Design underway	D	D	B&A	C	C	C		
32224L	Chlorine Contact Basin Isolation Gates and Structural Rehab	\$ 165,736	Design underway	D	D	B&A	C				
32241L	Effluent Pump Station Storage and Staging Area	\$ 250,000	Planning/design underway	P	P	D	D	B&A	C	C	C
32226L	Effluent Pump Station Upgrades	\$ 950,000	Design underway	D	D	B&A	C	C	C		
32243L	Plant 2 Headworks Rehabilitation	\$ 200,000	Design underway	D	D	D	B&A	C	C	C	C
32261L	Plant 1 and 2 Grit Assessment	\$ 50,000	FY 25/26					CA			
32233S	Scum Line Replacement	\$ 150,000	Construction underway	B&A	C	C	C				
32262L	DAF Polymer System Upgrade	\$ 741,000	FY 25/26					P	P	D	D
3216/32225C /32225S	Energy Building Upgrades	\$ 1,955,000	Design underway	D	D	B&A	C	C			
32232S	Buried Digester Gas and Flare Piping Improvements	\$ 125,000	Proposals under review	P	D	D	D	B&A	C	C	C
32234S	Heat Exchanger 4 Pipe Replacement	\$ 75,000	Proposals under review	P	D	D	D	B&A	C	C	C
32224S	MCC 2 and CF Reconstruction	\$ 3,000,000	FY 25/26					P	P	D	D
32231S	Gas Flare Replacement	\$ 2,000,000	Proposals under review	P	D	D	D	B&A	C	C	C
32261S	Odor Control Scrubber No. 2 Replacement	\$ 2,000,000	FY 25/26					P	P	D	D
32262S/32264S	Dewatering System Replacement	\$ 1,056,490	FY 25/26					P	P	D	D
32263S	Buried Digester Piping Reconstruction	\$ 250,000	Proposals under review	P	D	D	D	B&A	C	C	C
32243C	SCADA Server Replacement	\$ 200,000	Construction underway	B&A	C	C	C				
PC 15 - Coastal Treatment Plant											
3541A	Export Sludge Environmental Mitigation	\$ 1,392,100	Mitigation work/permitting ongoing	ENV	ENV	ENV	ENV				
352601	Grit Baffles and Diffusers	\$ 200,000	FY 25/26					D	D	B&A	C
352602/352603	East Primary Tank Sludge Piping, Troughs and Scum Skimmers	\$ 275,000	FY 25/26					P	D	D	D

SOCWA CIP Workplan

Project Number	Project Name	Project Budget	Status	FY 2024/2025				FY 2025/2026			
				Q1	Q2	Q3	Q4	Q1	Q2	Q3	Q4
3543	Export Sludge Pipeline Replacement at RTP	\$ 400,000	FY 25/26					P	D	D	D
35247L	Aeration Blower System Upgrades	\$ 142,657	Contract awarded	D	D	D	B&A	C	C	C	C
35246L/35239L	West Primary and Secondary Sludge Skimmers and Launderers/Weirs	\$ 1,100,000	Pre-procurement underway	B&A	C	C	C				
35229L/35235L	Odor Control Scrubber/Foul Air System Reconstruction	\$ 1,650,000	Contract awarded	D	D	D	B&A	C	C	C	C
3522AL	Drainage Pump Station	\$ 4,200,000	Final design underway	D	D	D	B&A	C	C	C	
3525	Personnel Building Reconstruction	\$ 471,586	Phase 1 construction underway	D	D	B&A	C	C	C	C	C
35233L/35236L	Scum Pump Station and Wet well	\$ 300,000	FY 25/26					P	D	D	D
35234L	RAS/WAS Pump Station Repair	\$ 100,000	FY 25/26					P	P	D	D
35237L	Electrical Manhole/Cable Project	\$ 85,000	FY 25/26					P	P	D	D
352604	EQ Tank Liner Rehabilitation	\$ 300,000	FY 25/26		D	B&A	C	C	C		
35248L	Access Road Repaving	\$ 950,000	Preparing bidding documents		D	D	B&A	C	C	C	C
35221L	Auxiliary Blower Building Roof	\$ 140,000	Construction underway	B&A	C	C					
35228L	Aeration Diffuser Replacement	\$ 1,700,000	Construction substantially complete	C	C						
35245L	Grating Replacement on Aeration/Secondary Deck	\$ 160,000	Construction underway	B&A	C	C	C				
35249L	SCADA Server Replacement	\$ 200,000	Construction underway	B&A	C	C	C				
PC 21 - Effluent Transmission Main											
3105/3106/ 3107/3108	Air Valve Replacement	\$ 911,424	Design underway	D	ENV	ENV	B&A	C	C		
3101/31221B	Trail Bridge Crossing	\$ 1,947,284	Planning/design underway	P	P	P	P	ENV	ENV	ENV	ENV
PC 24 - Aliso Creek Ocean Outfall											
34222O	Golf Course Road	\$ 45,000		D	B&A	C	C				

P	Planning
CA	Condition Assessment
ENV	Environmental/Permitting
D	Design
B&A	Bidding and Award
C	Construction

Agenda Item

6.G.

Board of Directors Meeting

Meeting Date: April 3, 2025

TO: Board of Directors

FROM: Amber Boone, General Manager

STAFF CONTACT: Roni Grant, Capital Improvement Program Manager

SUBJECT: Capital Improvement Construction Projects Progress and Change Order Report (March) [Project Committees 2 and 15]

Overview

This agenda item provides an update on projects in construction, including any change orders. Attached are the updated CIP reports.

Project Updates

JBL Scum Line Replacement

Construction is currently in progress.

JBL Electrical Upgrades

Pre-purchasing of MCC and Plant 1 Generator is underway.

JBL and CTP SCADA System

Upgrades started earlier this year and are near completion. There is one change order in the amount of \$14,626.50, bringing the revised total contract amount to \$420,526.50. This change order covers the software licensing for Win-911 FactoryTalk A&E, including licensing and backup version upgrades. This system will allow backup in case the primary SCADA system is down.

CTP Diffusers Replacement

The contractor substantially completed the contract work and is working on the final punch list items.

CTP Aeration Deck Grating Replacement

Construction is currently in progress.

CTP West Primary and Secondary Scum Skimming System

Pre-Purchasing of scum skimmers, launders, and weirs is currently in progress.

CTP Auxiliary Blower Building Roof Replacement

Construction was completed with no change orders.

CTP Personnel Building Sewer Rehabilitation

Construction is currently in progress.

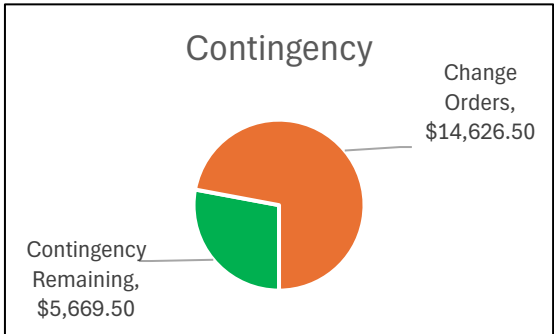
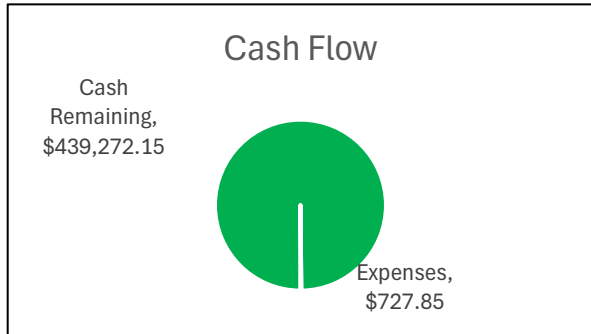
Recommended Action: Information Item.

Project Financial Status

Project Committee	2 and 15
Project Name	SCADA System Upgrades - 32243C and 35249L
Project Description	SCADA server replacement and upgrades at JBL and CTP

Data Last Updated

March 4, 2025



Cash Flow

Collected	\$ 440,000.00
Expenses	\$ 727.85

Project Completion

Schedule	95%
Budget	1%

Construction Contracts

Company	PO No.	Original	Change Orders	Amendments	Total	Costs to Date
W. M. Lyles	20660	\$ 405,900.00	\$ 14,626.50		\$ 420,526.50	\$ -
SOCWA Staff Time						\$ 727.85
		\$ 405,900.00	\$ 14,626.50	\$ -	\$ 420,526.50	\$ 727.85

**Values include change orders to be reviewed by the Engineering Committee*

Construction Contingency

Area	Project Code	Amount	Change Orders	Total Remaining	Percent Used
Common	32243C	\$ 20,296.00	\$ 14,626.50	\$ 5,669.50	72.1%
		\$ 20,296.00	\$ 14,626.50	\$ 5,669.50	72.1%

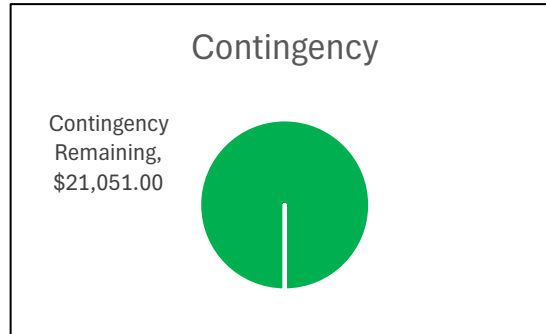
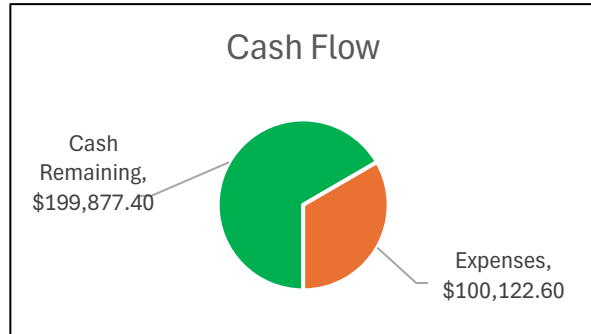
Change Order No.	Vendor Name	Project ID	Description	Status Date	Days	Amount
1	W. M. Lyles	32243C	Win911 SCADA Programming	1/21/2025		\$ 14,626.50

Project Financial Status

Data Last Updated

March 4, 2025

Project Committee	2
Project Name	Scum Line Replacement - 32233S
Project Description	Replacement of scum line at Plant 1 Aeration Basin 1



Cash Flow

Collected	\$ 300,000.00
Expenses	\$ 100,122.60

Project Completion

Schedule	40%
Budget	37%

Construction Contracts

Company	PO No.	Original	Change Orders	Amendments	Total	Costs to Date
SS Mechanical	20557	\$ 278,949.00	\$ (39,765.68)		\$ 239,183.32	\$ 81,103.18
Project Partners	20164	\$ 30,000.00			\$ 30,000.00	\$ 9,280.00
Steve Andrews	20332	\$ 5,232.00			\$ 2,818.00	\$ 724.50
SOCWA Staff Time	32233S					\$ 9,014.92
		\$ 314,181.00	\$ (39,765.68)	\$ -	\$ 272,001.32	\$ 100,122.60

**Values include change orders to be reviewed by the Engineering Committee*

Construction Contingency

Area	Project Code	Amount	Change Orders	Total Remaining	Percent Used
Solids	32233S	\$ 21,051.00	\$ (39,765.68)	\$ 21,051.00	0.0%
		\$ 21,051.00	\$ (39,765.68)	\$ 21,051.00	0.0%

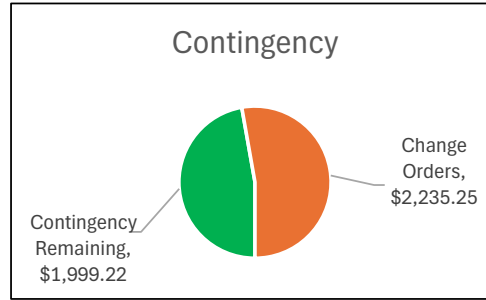
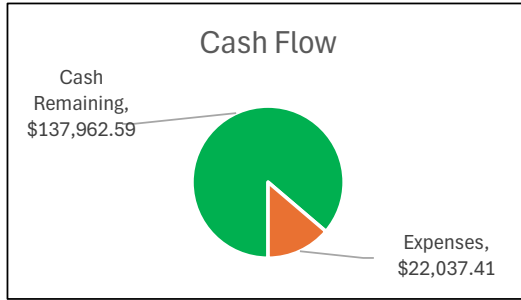
Change Order No.	Vendor Name	Project ID	Description	Status Date	Days	Amount
1	SS Mechanical	32233S	Change pipe diameter from 12" to 10"	1/8/2025	94	\$ (39,765.68)
						\$ (39,765.68)

Project Financial Status

Project Committee	15
Project Name	Grating Replacement on Aeration/Secondary Deck - 35245L
Project Description	Replacement of grating on west aeration/secondary deck

Data Last Updated

March 4, 2025



Cash Flow

Collected	\$ 160,000.00
Expenses	\$ 22,037.41

Project Completion

Schedule	20%
Budget	12%

Construction Contracts

Company	PO No.	Original	Change Orders	Amendments	Total	Costs to Date
SS Mechanical	20588	\$ 147,126.00	\$ 10,874.78		\$ 158,000.78	\$ 4,700.00
Project Partners	20877	\$ 25,000.00			\$ 25,000.00	\$ 7,840.00
Steve Andrews	20332	\$ 2,818.00			\$ 2,818.00	\$ 483.00
SOCWA Staff Time	35245L					\$ 9,014.41
		\$ 174,944.00	\$ 10,874.78	\$ -	\$ 185,818.78	\$ 22,037.41

**Values include change orders to be reviewed by the Engineering Committee*

Construction Contingency

Area	Project Code	Amount	Change Orders	Total Remaining	Percent Used
Liquids	35245L	\$ 12,874.00	\$ 10,874.78	\$ 1,999.22	84.5%
		\$ 12,874.00	\$ 10,874.78	\$ 1,999.22	84.5%

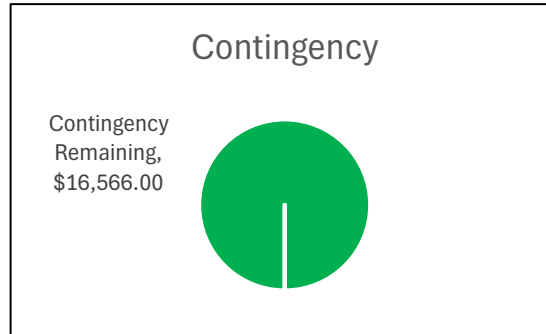
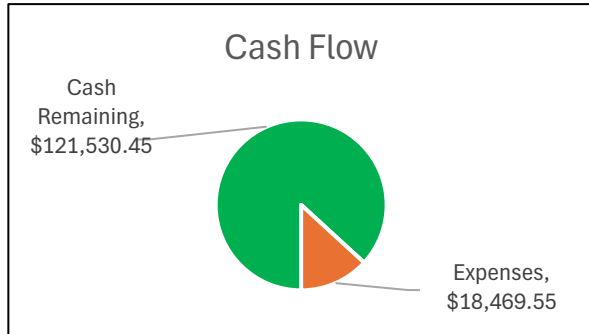
Change Order No.	Vendor Name	Project ID	Description	Status Date	Days	Amount
1	SS Mechanical	35245L	316L SST angle in lieu of 304L SST angle at the Step-Feed Channel	1/8/2025		\$ 2,235.25
2	SS Mechanical	35245L	Change Secondary effluent grating from 1-inch to 1.5"	1/31/2025		\$ 8,639.53

Project Financial Status

Data Last Updated

Project Committee	15
Project Name	Auxiliary Blower Building Roof Replacement - 35221L
Project Description	Replacement of Auxiliary Blower Building roof

March 4, 2025



Cash Flow

Collected	\$ 140,000.00
Expenses	\$ 18,469.55

Project Completion

Schedule	99%
Budget	14%

Construction Contracts

Company	PO No.	Original	Change Orders	Amendments	Total	Costs to Date
Best Contracting	20911	\$ 123,434.00			\$ 123,434.00	
Project Partners	20877	\$ 10,000.00			\$ 10,000.00	\$ 6,560.00
SOCWA Staff Time	35221L					\$ 11,909.55
		\$ 133,434.00	\$ -	\$ -	\$ 133,434.00	\$ 18,469.55

**Values include change orders to be reviewed by the Engineering Committee*

Construction Contingency

Area	Project Code	Amount	Change Orders	Total Remaining	Percent Used
Liquids	35221L	\$ 16,566.00		\$ 16,566.00	0.0%
		\$ 16,566.00	\$ -	\$ 16,566.00	0.0%

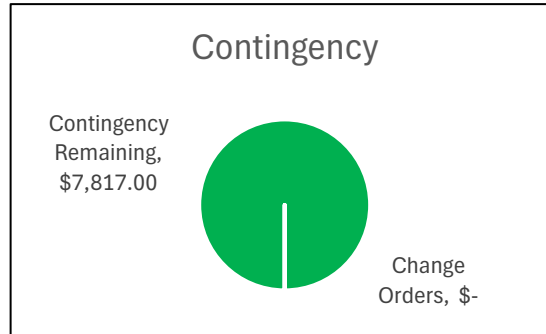
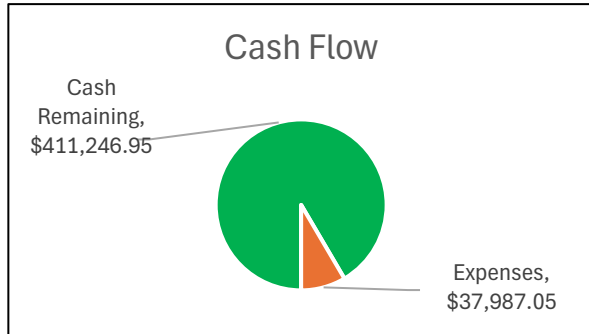
Change Order No.	Vendor Name	Project ID	Description	Status Date	Days	Amount
						\$ -

Project Financial Status

Data Last Updated

Project Committee	15
Project Name	Personnel Building Sewer Rehabilitation - 3525
Project Description	Replacement of grating on west aeration/secondary deck

March 4, 2025



Cash Flow

Collected	\$ 449,234.00
Expenses	\$ 37,987.05

Project Completion

Schedule	15%
Budget	34%

Construction Contracts

Company	PO No.	Original	Change Orders	Amendments	Total	Costs to Date
T.E. Roberts	20930	\$ 78,165.00			\$ 78,165.00	
Project Partners	20877	\$ 35,000.00			\$ 35,000.00	\$ 14,880.00
SOCWA Staff Time	3525					\$ 23,107.05
		\$ 113,165.00	\$ -	\$ -	\$ 113,165.00	\$ 37,987.05

**Values include change orders to be reviewed by the Engineering Committee*

Construction Contingency

Area	Project Code	Amount	Change Orders	Total Remaining	Percent Used
Liquids	3525	\$ 7,817.00		\$ 7,817.00	0.0%
		\$ 7,817.00	\$ -	\$ 7,817.00	0.0%

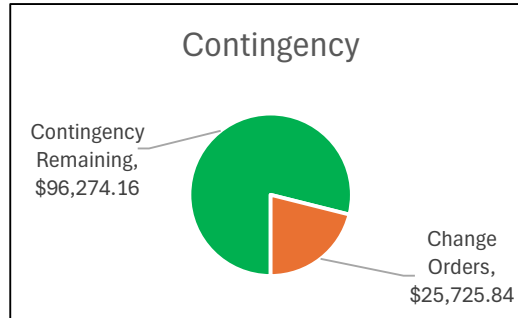
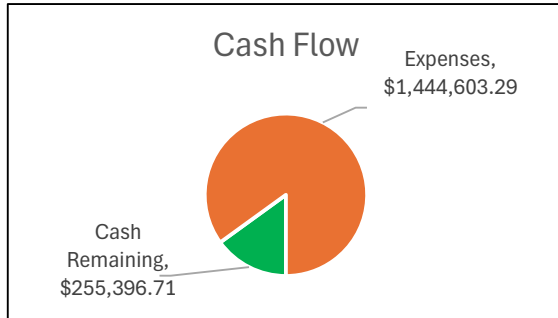
Change Order No.	Vendor Name	Project ID	Description	Status Date	Days	Amount
						\$ -

Project Financial Status

Data Last Updated

Project Committee	15
Project Name	Aeration Diffusers Replacement - 35228L
Project Description	Replacement of diffusers in the aeraiton tanks.

March 4, 2025



Cash Flow

Collected	\$ 1,700,000.00
Expenses	\$ 1,444,603.29

Project Completion

Schedule	100%
Budget	96%

Construction Contracts

Company	PO No.	Original	Change Orders	Amendments	Total	Costs to Date
Filanc	19640	\$ 1,022,250.00	\$ 25,725.84		\$ 1,047,975.84	\$ 1,047,975.84
EDI	16620	\$ 250,490.00			\$ 250,490.00	\$ 250,490.00
EDI	20885	\$ 82,800.00			\$ 82,800.00	
Hazen	17256/19641	\$ 93,578.00			\$ 93,578.00	\$ 57,894.04
SS Mechanical	20443	\$ 37,535.00			\$ 37,535.00	\$ 37,535.00
SOCWA Staff Time	35228L					\$ 50,708.41
		\$ 1,486,653.00	\$ 25,725.84	\$ -	\$ 1,512,378.84	\$ 1,444,603.29

**Values include change orders to be reviewed by Engineering Committee*

Construction Contingency

Area	Project Code	Amount	Change Orders	Total Remaining	Percent Used
Liquids	35228L	\$ 122,000.00	\$ 25,725.84	\$ 96,274.16	21.1%
		\$ 122,000.00	\$ 25,725.84	\$ 96,274.16	21.1%

Change Order No.	Vendor Name	Project ID	Description	Status Date	Days	Amount
1	Filanc	35228L	Contract Extension	4/4/2024	273	\$ -
2	Filanc	35228L	Solids removal in basins	1/25/2025	60	\$ 25,725.84

Agenda Item

7.A.

Board of Directors Meeting

Meeting Date: April 3, 2025

TO: Board of Directors

FROM: Amber Boone, General Manager

STAFF CONTACT: Roni Grant, Capital Improvement Program Manager

SUBJECT: J.B. Latham Treatment Plant (JBL) Flare System and Underground Piping Replacement Final Design [Project Committee 2]

Overview

The existing digester gas and hot water loop piping serving the digesters is highly corroded and requires replacement. The buried portions of these pipelines run through an area that is congested with other process piping. Excavating in this area would be difficult, and leaks in buried piping can be difficult to locate and repair. Locating the new utilities above-ground could reduce construction costs, operational impacts, future maintenance costs and improve reliability.

The current flare system has been in operation since 1971 and has reached the end of its useful life. SOCWA engaged DHK Engineer in 2013 for a digester gas flare condition assessment and Carollo Engineers in 2018 for a flare study. In addition, SCAQMD has previously advised SOCWA that the existing flare does not meet the requirements of Rule 1118.1 because (in the view of SCAQMD) it exceeded the annual capacity thresholds set forth in the rule during two consecutive years.

Rule 1118.1 provides two pathways to continue operating the existing flare:

- Rule 1118.1(d)(5) allows for the continued operation of an existing flare that exceeds the annual capacity thresholds if SOCWA submits a Notice of Intent (NOI) to replace the flare and then applies for a permit to construct a replacement flare. SOCWA would have 18 months from the date of permit to construct a replacement flare, plus an additional 12 months if needed due to circumstances that prevented the installation within the 18-month period. SOCWA did submit a NOI to replace the flare and applied for the permit to construct it at the end of 2024.
- Under this provision, rather than submitting a NOI to replace an existing flare, SOCWA would submit a NOI to reduce Flare Input. Compliance with the rule would then entail monitoring digester gas input to the flare (using the existing meter) to ensure that the gas input to the flare does not exceed 5% of its maximum capacity on an annual basis. Rule 1118.1 also includes a provision that allows SOCWA to change its notification of intent from one to the other compliance path. In this case, it would involve submitting a Notification of Flare Input Reduction and rescinding the Notification of Flare Replacement.

The final design project elements include the following:

- Replace existing flare with new flare and piping and new location.
- Replace Hot Water Piping between digesters.
- Replace Digester Gas Piping between digesters and flare.
- Piping structures to accommodate proposed (this project) and future piping needs.

Proposals

SOCWA solicited proposals through PlanetBids on November 13, 2024. Eight firms were contacted during this process:

- Black and Veatch
- Carollo Engineers
- Dudek
- Hazen and Sawyer
- HDR
- Kleinfelder
- MKN
- TYLin

Three proposals were received from Carollo, Dudek, and MKN. Staff reached out to the firms who did not propose. The timeline either did not work, or the firms did not have enough pipe bridge experience.

The proposals were distributed to the evaluation committee (PC 2 Engineering Committee members and SOCWA staff) on January 30, 2025. At the February Engineering Committee meeting, it was proposed to conduct Q&A sessions with Dudek and MKN. These sessions were facilitated by staff on March 4, 2025, with the participation of PC 2 Engineering Committee members and SOCWA staff.

In light of the upcoming master planning effort, it is recommended to award the contract with a total not-to-exceed amount, structured in phases. The initial phase will focus on the design of the above-ground piping system, followed by the replacement of the flare. Staff has engaged with Dudek and MNK to request revised fee proposals that align with this phased approach. A summary of the proposals and SOCWA staff ratings is provided in Table 1.

Table 1 – Summary of Proposals

Firm	Dudek	MKN
Project Manager	Ken Deibert	Ryan Gallagher
Total Labor Hours	1,298*	1,497*
Phase 1 Fee	\$279,175	\$260,820
Phase 2 Fee	\$130,815	\$180,309
Total Fee	\$409,990	\$441,129
SOCWA Staff Rating (80 max)	68	71

*Subconsultants hours were not included in the total labor hours.

A summary of the SOCWA staff's rating of the proposals is provided in Table 2.

Table 2: Evaluation Criteria

Evaluation Criteria	Dudek	MKN
Overall Qualifications and Experience of Firm (20 points)	17	18
Record of like projects: (10 points)	7	9
Realistic level of effort: (20 points)	17	18
Ability to Deliver Timely: (10 points)	9	9
Responsibility & Responsiveness:	Yes	Yes
Cost Competitive: (20 Points)	18	17
Total: (80 possible)	68	71

Staff recommends MKN due to the following:

- The firm has the most realistic project understanding and approach.
- The project team and manager have recently completed similar work.
- The firm has a strong constructability review team, which is important for this project.
- The firm uses innovative technology to identify potential utility conflicts.

Cost Allocation

The Phase 1 cost allocation for the final design is detailed in Table 3. Staff requests a 10% contingency, amounting to \$26,082, to cover potential unknown issues during the design phase. This brings the total Phase 1 budget to \$286,902. Similarly, the Phase 2 cost allocation for the final design is outlined in Table 4. Staff requests a 10% contingency, amounting to \$18,031, for potential unknown issues during the design phase. This results in a total Phase 2 project budget of \$198,340. In summary, the total contingency requested is \$44,113, and the overall project budget is \$485,242.

Table 3 – Phase 1 Cost allocation by member agency (including contingency)

Agency	Buried Digester and Flare Gasline Replacement (32232S)	Buried Digester and Flare Gasline (32232S)	Heat Exchanger No. 4 Pipe Replacement (32234S)	Total
South Coast Water District	\$32,240.33	\$20,299.46	\$66,868.82	\$119,408.61
Santa Margarita Water District	\$45,223.21	\$28,473.88	\$93,796.30	\$167,493.39
Total	\$77,463.54	\$48,773.34	\$160,665.12	\$286,902.00

Table 4 – Phase 2 Cost allocation by member agency (including contingency)

Agency	Gas Flare Replacement (32231S)
South Coast Water District	\$82,549.11
Santa Margarita Water District	\$115,790.89
Total	\$198,340.00

Prior Related Project Committee or Board Action (s)

This item was reviewed and discussed by the Engineering Committee on February 13 and March 13, 2025. The Engineering Committee agreed with staff’s recommendation.

Budget

The Buried Digester and Flare Gasline Replacement (32232S) has a project budget of \$125,000. The Heat Exchanger No. 4 Pipe Replacement (32234S) has a project budget of \$75,000. The Buried Digester Piping Reconstruction (32263S) has a project budget of \$250,000, resulting in a total Phase 1 budget of \$450,000. The Gas Flare Replacement (32231S) has a proposed budget of \$537,790 for FY 25/26.

Recommended Action: The Engineering Committee recommends that the PC 2 Board of Directors: i) approve a contract with MKN for a total of \$441,129 and ii) approve a project contingency of \$44,133 to cover potential unknown issues during final design for a total project budget of \$485,242.

TASK 8: 90% AND 100% BID SET

This task includes the completion of design phases 1 and 2. After SOCWA staff reviews the 50% submittal, Dudek will provide the 90% bid set of construction documents. The 90% bid set will represent the end of Phase 1 of the design. Phase 1 includes the piping layout and structural work that can be completed before the design flare capacity is determined by SOCWA. Once the 90% bid set is completed and reviewed, then it will be ready for Phase 2, which will be to incorporate the electrical design for the specified flare into the 100% bid set.

Task 8.1: 90% bid set without the flare

Dudek will provide the 90% bid set of construction documents without the flare details and only the location of the flare. The 90% bid set will include the design elements that can be completed before the final flare capacity and model is determined. This task will include plans, specifications, and opinion of construction cost (Class II Bid Estimate) that incorporate the review comments from the 50% submittal, standard details, and the list of specifications provided by SOCWA.

Deliverables

- 90% design plans and technical specifications (Division 2)
- 90% opinion of construction cost (Class II Bid estimate)
- SOCWA comments from the 50% submittal

Task 8.2: 100% bid set including the flare

This represents phase 2 of the design. Once the 90% bid set is completed and reviewed, Dudek will receive additional data from SOCWA to allow the determination of the flare model. The specific flare model will be incorporated into the electrical design for the 100% bid set.

Deliverables

- 100% design plans and technical specifications (Division 2)
- 100% opinion of construction cost (Class II Bid estimate)
- SOCWA comments from the 90% submittal

Assumptions

- SOCWA will determine the flare capacity with the Master Plan.
- Dudek will determine the appropriate model based on the capacity requirements.
- There may be minor revisions after review of the 100% bid set to provide a final bid set.

Electrical Assumptions

- SOCWA will provide record drawings of existing flare, digester area PLC panels, and electrical equipment.
- The existing flare is powered and controlled from panels and PLC near MCC-F in the NE corner of the plant.
- Power and controls to the PLC and electrical equipment for the new flare can run from Bldg 60 between Digesters 1 and 2 or from DAF MCC to the west of the new location.
- One electrical in-person site visit was budgeted at the beginning of the design.

- Dudek will not design E&I modifications to bring the existing digester area up to NFPA 820 code. Only work added for new flare will be made NFPA 820 compliant.
- Assumed that existing PLCs have available I/O and there is no need to add a PLC panel.
- Assumed hard-wired I/O from flare to PLC, not network communications.

		Dudek Labor Hours and Rates										Subconsultant Fees							
Project Team Role:		PIC	QA/QC	Senior Project Manager	Project Manager	Senior Engineer	Project Engineer	CAD Designer	Electrical Engineer	Admin	TOTAL DUDEK HOURS	DUDEK LABOR COSTS	Structural	Technical Advisor	Surveying	Potholing	OTHER DIRECT COSTS	TOTAL FEE	
Team Member:		Mike Metts	Brian Robertson	Ken Deibert	Sam Hawkinson	Servando Diaz	Hilary Goldschmidt	Nikki Hunter	Joe Schneider	Michelle Kinney			Kelsey	DHK	Kelsoe	Bess			
Billable Rate :		\$330	\$275	\$290	\$275	\$260	\$200	\$200	\$290	\$100			Fee	Fee	Fee	Fee			
Task 1	Project Management																		
1.1	Schedule, Status Reports, Admin			12	4	8				8	32	\$ 7,460	\$4,180	\$390					
1.2	Engineering Phase Meetings (6)		2	10	4	6	4		6		32	\$ 8,650	\$1,760	\$780			\$ 800	\$ 11,990	
	Subtotal Task 1		2	22	8	14	4		6	8	64	\$ 16,110	\$ 5,940	\$ 1,170	\$ -	\$ -	\$ 800	\$ 24,020	
Task 2	Data Collection & Document Review																		
2.1	Record Drawing Review			3	3	6	6		2		20	\$ 5,035	\$1,600	\$390				\$ 7,025	
2.2	Utility Research			3	3	6	6		2		20	\$ 5,035	\$1,560	\$390				\$ 6,985	
	Subtotal Task 2			6	6	12	12		4		40	\$ 10,070	\$ 3,160	\$ 780	\$ -	\$ -	\$ -	\$ 14,010	
Task 3	Survey																		
3.1	Site Reconnaissance			2	2	6	4				14	\$ 3,490		\$390			\$ 1,200	\$ 5,080	
3.2	Piping and Field Measurements			2	2	6	4				14	\$ 3,490		\$9,000		\$ 1,200	\$ 13,690		
	Subtotal Task 3			4	4	12	8				28	\$ 6,980	\$ -	\$ 390	\$ 9,000	\$ -	\$ 2,400	\$ 18,770	
Task 4	Potholing																		
4.1	Potholing plan		1	2	2	4	8	8			25	\$ 5,645		\$390	\$3,150	\$15,540		\$ 24,725	
	Subtotal Task 4		1	2	2	4	8	8			25	\$ 5,645	\$ -	\$ 390	\$ 3,150	\$ 15,540	\$ -	\$ 24,725	
Task 5	Conceptual Design																		
5.1	Conceptual Design TM	1	2	8	8	24	24	16	4		87	\$ 20,800	\$10,280	\$780				\$ 31,860	
	Subtotal Task 5	1	2	8	8	24	24	16	4		87	\$ 20,800	\$ 10,280	\$ 780	\$ -	\$ -	\$ -	\$ 31,860	
Task 6	Conceptual Design Workshop																		
6.1	Conceptual Design Workshop		2	3	2	2	2		2		13	\$ 3,470	\$1,240	\$390			\$ 1,800	\$ 6,900	
	Subtotal Task 6		2	3	2	2	2		2		13	\$ 3,470	\$ 1,240	\$ 390	\$ -	\$ -	\$ 1,800	\$ 6,900	
Task 7	50% Submittal																		
7.1	50% Submittal	2	2	14	14	40	40	154	8	4	278	\$ 61,040	\$14,640	\$1,560				\$ 77,240	
	Subtotal Task 7	2	2	14	14	40	40	154	8	4	278	\$ 61,040	\$ 14,640	\$ 1,560	\$ -	\$ -	\$ -	\$ 77,240	
Task 8	90% and 100% Bid Set																		
8.1	90% Bid Set (without flare)	1	2	14	14	40	40	154	8	4	277	\$ 60,710	\$19,380	\$1,560				\$ 81,650	
8.2	100% Bid Set (including flare)	1	2	4	4	16	16	104	92		239	\$ 57,980						\$ 57,980	
	Subtotal Task 8	1	4	18	18	56	56	258	100	4	516	\$ 118,690	\$ 19,380	\$ 1,560	\$ -	\$ -	\$ -	\$ 139,630	
Task 9	Constructability Review																		
9.1	Constructability Review	1	1	2	2	4	6		3		19	\$ 4,845						\$ 4,845	
	Subtotal Task 9	1	1	2	2	4	6		3		19	\$ 4,845	\$ -	\$ -	\$ -	\$ -	\$ -	\$ 4,845	
Task 10	Technical Specifications & Standard Details																		
10.1	Technical Specification Review	1	1	2	2	4	8		3	2	23	\$ 5,445		\$390				\$ 5,835	
	Subtotal Task 10	1	1	2	2	4	8		3	2	23	\$ 5,445	\$ -	\$ 390	\$ -	\$ -	\$ -	\$ 5,835	
Task 11	Construction Sequencing & Shutdown Plan																		
11.1	Sequencing & Shutdown Plan	1	1	2	2	4	6		2		18	\$ 4,555		\$390				\$ 4,945	
	Subtotal Task 11	1	1	2	2	4	6		2		18	\$ 4,555	\$ -	\$ 390	\$ -	\$ -	\$ -	\$ 4,945	
Task 12	Bidding & Engineering Services During Construction																		
12.1	Bid Phase Services		1	1	2	4	4		2		14	\$ 3,535	\$840					\$ 4,375	
12.2	Conformed Drawings & Specifications		1	1	2	2	4	12	2		24	\$ 5,415						\$ 5,415	
12.3	Construction meetings		2	6	4	6	6		2		26	\$ 6,730		\$780				\$ 7,510	
12.4	Review Submittals		2	3	2	16	16		12		51	\$ 12,810	\$4,920	\$390				\$ 18,120	
12.5	Respond to RFIs		2	2	4	8	8	2	4		30	\$ 7,470	\$1,560	\$780				\$ 9,810	
12.6	Change Orders		1	1	1	2	2		2		9	\$ 2,340						\$ 2,340	
12.7	Record Drawings		1	1	1	4	4	20	2		33	\$ 7,260	\$2,380					\$ 9,640	
	Subtotal Task 12		10	15	16	42	44	34	26		187	\$ 45,560	\$ 9,700	\$ 1,950	\$ -	\$ -	\$ -	\$ 57,210	
	Total Hours and Fee	8	26	98	84	218	218	470	158	18	1298	\$ 303,210	\$ 64,340	\$ 9,750	\$ 12,150	\$ 15,540	\$ 5,000	\$ 409,990	
	<i>Percent of Hours:</i>	1%	2%	8%		17%	17%	36%	12%	1%	100%								

South Orange County Wastewater Authority



Phase 1 - Hot Water Piping

	QA/QC - ES	Project Manager - RG	Civil - JR	Mechanical - JH	Project Engineer I	Constructability - PB	Senior Designer - KN	Administrative Assistant	Total Hours (MKN)	Labor (MKN)	GRS - Laser Scanning	Structural	Electrical/Instrumentation	Potholing	Non-Labor Costs	Total Fee
Hourly Rates	289	289	289	289	203	272	185	113								
Task 1 - Project Management (6 mos.) and Meetings (6)	1	36	6	6					49	\$ 14,161	\$ -	\$ -	\$ -	\$ -	\$ -	\$ 14,161
Task 2 - Data Collection and Document Review		8	8	10	10				36	\$ 9,544	\$ -	\$ -	\$ -	\$ -	\$ -	\$ 9,544
Task 3 - Surveying					8		24		32	\$ 6,064	\$ 3,410	\$ -	\$ -	\$ -	\$ 3,410	\$ 9,474
Task 4 - Potholing (4 per RFP)				4	4		4		12	\$ 2,708	\$ -	\$ -	\$ -	\$ 6,600	\$ 6,600	\$ 9,308
Task 5 - Conceptual Design	4	8	16	36	40	0	44	0	148	\$ 34,756	\$ 7,920	\$ 2,200	\$ -	\$ -	\$ 10,120	\$ 44,876
Basemap with Alternatives	4	4	12	12	16		24		72	\$ 16,936	\$ 7,920	\$ 2,200	\$ -	\$ -	\$ 10,120	\$ 27,056
Potholing Plan/ Proposed Foundations				4	4		4		12	\$ 2,708	\$ -	\$ -	\$ -	\$ -	\$ -	\$ 2,708
Consideration of Future Pipes		2		8	16		16		42	\$ 9,098	\$ -	\$ -	\$ -	\$ -	\$ -	\$ 9,098
Construction Cost and Duration			4	4	4				12	\$ 3,124	\$ -	\$ -	\$ -	\$ -	\$ -	\$ 3,124
Construction Phasing Plan		2		8					10	\$ 2,890	\$ -	\$ -	\$ -	\$ -	\$ -	\$ 2,890
Task 6 - Conceptual Design Workshop		2	2	2	2		2		10	\$ 2,510	\$ -	\$ 550	\$ 550	\$ -	\$ 1,100	\$ 3,610
Task 7 - 50% Deliverable (Plans, Estimate)	6	2	30	46	80	0	78	0	242	\$ 54,946	\$ -	\$ 3,850	\$ 2,750	\$ -	\$ 6,600	\$ 61,546
Construction Plans (11 MKN, 7 others)	4	2	28	38	64		78		214	\$ 48,230	\$ -	\$ 3,850	\$ 2,750	\$ -	\$ 6,600	\$ 54,830
Estimate	2		2	8	16				28	\$ 6,716	\$ -	\$ -	\$ -	\$ -	\$ -	\$ 6,716
Task 8 - Bid Set (Plan, Estimate)	4	2	12	23	36	0	40	0	117	\$ 26,557	\$ -	\$ 5,830	\$ 2,750	\$ -	\$ 8,580	\$ 35,137
Construction Plans (11 MKN, 7 others)	4	2	12	19	32		40		109	\$ 24,589	\$ -	\$ 5,830	\$ 2,750	\$ -	\$ 8,580	\$ 33,169
Estimate				4	4				8	\$ 1,968	\$ -	\$ -	\$ -	\$ -	\$ -	\$ 1,968
Task 9 - Constructability Review		2		8	8	8	4		30	\$ 7,430	\$ -	\$ -	\$ -	\$ -	\$ -	\$ 7,430
Task 10 - Technical Specifications and Standard Details	4		4	8	24			8	48	\$ 10,400	\$ -	\$ -	\$ 1,518	\$ -	\$ 1,518	\$ 11,918
Task 11 - Construction Sequencing and Shutdown Plan	2	2		8	8				20	\$ 5,092	\$ -	\$ -	\$ -	\$ -	\$ -	\$ 5,092
Task 12 - Bid and ESDC	2	28	17	32	61	0	32	0	172	\$ 41,134	\$ -	\$ 3,795	\$ 3,795	\$ -	\$ 7,590	\$ 48,724
Bid Phase Support		4	4	4	8		4		24	\$ 5,832	\$ -	\$ -	\$ -	\$ -	\$ -	\$ 5,832
Project Management and Construction Meetings (5)		6		5					11	\$ 3,179	\$ -	\$ 275	\$ 275	\$ -	\$ 550	\$ 3,729
Submittal Review (up to 20)		10	10	15	35				70	\$ 17,220	\$ -	\$ 1,100	\$ 1,100	\$ -	\$ 2,200	\$ 19,420
RFI Review (up to 5)		4		5	6		4		19	\$ 4,559	\$ -	\$ 1,100	\$ 1,100	\$ -	\$ 2,200	\$ 6,759
Change Order Support		2	3	3	4		8		20	\$ 4,604	\$ -	\$ 550	\$ 550	\$ -	\$ 1,100	\$ 5,704
Record Drawings (18 sheets)		2	2		8		16		28	\$ 5,740	\$ -	\$ 770	\$ 770	\$ -	\$ 1,540	\$ 7,280
TOTAL BUDGET	23	90	95	183	281	8	228	8	916	\$ 215,302	\$ 11,330	\$ 16,225	\$ 11,363	\$ 6,600	\$ 45,518	\$ 260,820

South Orange County Wastewater Authority

Phase 2 - Flare



	QA/QC - KN	Project Manager - RG	Civil - JR	Mechanical - JH	Project Engineer I	Senior Designer - KN	Administrative Assistant	Total Hours (MKN)	Labor (MKN)	Structural	Electrical/Instrumentation	Potholing	Non-Labor Costs	Total Fee
Hourly Rates	289	289	289	289	203	185	113							
Task 1 - Project Management (5 mos.) and Meetings (4)	1	28	4	4				37	\$ 10,693	\$ -	\$ 825	\$ -	\$ 825	\$ 11,518
Task 2 - Data Collection and Document Review			4	5	5			14	\$ 3,616	\$ -	\$ 1,100	\$ -	\$ 1,100	\$ 4,716
Task 3 - Surveying					8	16		24	\$ 4,584	\$ -	\$ -	\$ -	\$ -	\$ 4,584
Task 4 - Potholing (6 New Flare)					2	2		4	\$ 776	\$ -	\$ -	\$ 6,600	\$ 6,600	\$ 7,376
Task 5 - Flare Preliminary Design TM	4	4	16	35	16	24		99	\$ 24,739	\$ -	\$ 2,750	\$ -	\$ 2,750	\$ 27,489
Task 6 - Conceptual Design Workshop		2	2	2				6	\$ 1,734	\$ -	\$ 506	\$ -	\$ 506	\$ 2,240
Task 7 - 50% Deliverable (Plans, Estimate)	6	2	18	28	48	45	0	147	\$ 33,675	\$ 3,850	\$ 3,300	\$ -	\$ 7,150	\$ 40,825
Construction Plans (8 MKN, 5 others)	4	2	16	24	36	45		127	\$ 28,927	\$ 3,850	\$ 3,300	\$ -	\$ 7,150	\$ 36,077
Estimate	2		2	4	12			20	\$ 4,748			\$ -	\$ -	\$ 4,748
Task 8 - Bid Set (Plan, Estimate)	4	2	8	16	22	23	0	75	\$ 17,299	\$ 2,750	\$ 4,400	\$ -	\$ 7,150	\$ 24,449
Construction Plans (8 MKN, 5 others)	4	2	8	12	18	23		67	\$ 15,331	\$ 2,750	\$ 4,400	\$ -	\$ 7,150	\$ 22,481
Estimate				4	4			8	\$ 1,968	\$ -	\$ -	\$ -	\$ -	\$ 1,968
Task 9 - Constructability Review								0	\$ -	\$ -	\$ -	\$ -	\$ -	\$ -
Task 10 - Technical Specifications and Standard Details	2		4	8	16		4	34	\$ 7,746	\$ -	\$ 1,518	\$ -	\$ 1,518	\$ 9,264
Task 11 - Construction Sequencing and Shutdown Plan	2			4	4			10	\$ 2,546	\$ -	\$ -	\$ -	\$ -	\$ 2,546
Task 12 - Bid and ESDC	2	21	11	25	50	22	0	131	\$ 31,271	\$ 1,650	\$ 3,795	\$ -	\$ 5,445	\$ 36,716
Bid Phase Support		4	2	4	8			18	\$ 4,514	\$ -	\$ -	\$ -	\$ -	\$ 4,514
PM (4 mo.) & Construction Meetings (3)		4		3				7	\$ 2,023	\$ -	\$ 275	\$ -	\$ 275	\$ 2,298
Submittal Review (up to 10)		5	5	10	24			44	\$ 10,652	\$ 550	\$ 1,100	\$ -	\$ 1,650	\$ 12,302
RFI Review (up to 5)		4		4	6	4		18	\$ 4,270	\$ 550	\$ 1,100	\$ -	\$ 1,650	\$ 5,920
Change Order Support		2	4	4	4	8		22	\$ 5,182	\$ -	\$ 550	\$ -	\$ 550	\$ 5,732
Record Drawings (14 sheets)	2	2			8	10		22	\$ 4,630	\$ 550	\$ 770	\$ -	\$ 1,320	\$ 5,950
TOTAL BUDGET	21	59	67	127	171	132	4	581	\$ 138,679	\$ 8,250	\$ 18,194	\$ 6,600	\$ 33,044	\$ 171,723

5% Escalation (2025 start date) \$ 180,309

Agenda Item

8.A.

Legal Counsel Review: No

Meeting Date: April 3, 2025

TO: Board of Directors
FROM: Amber Boone, General Manager
SUBJECT: FY 2025-26 Administration Budget Review

Summary

On December 9, 2024, SOCWA Member Agencies signed the Transfer Price Allocation Memorandum of Understanding (MOU). The MOU stated that “The Remaining Member Agencies shall evaluate a target overhead reduction in annual SOCWA overhead expenses of Five Hundred Thousand Dollars (\$500,000.00) or more.” The administration department results in a substantial cost reduction in the upcoming fiscal year, with total expenses decreasing by 48.0% from \$2,573,397 to \$1,738,306. This significant reduction is primarily driven by a 56.1% decrease in payroll costs, with regular salaries decreasing by 53.0% from \$1,116,326 to \$729,700 and fringe benefits decreasing by 60.3%.

Discussion/Analysis

Table 1 provides the comparison of the administration pool from FY 24-25 to the draft FY 25-26. Based on the draft FY 25-26 administration budget, there will be a \$835,391 cost reduction in Department 04 (Table 2). The budget process does not include merit or COLA in the budget as a normal procedure at this junction due to ongoing discussions with Labor. To achieve the MOU reductions, there was a reduction in the total workforce in administration by three (3) positions, which represented most of the cost savings (Table 1). Engineering admin time was included in the administration budget for lean accounting purposes, the administrative assistant is working part-time, and the Deputy General Manager represents 5% of their time in administration costs.

Table 1: Administration Composition Comparison between Fiscal Years (FY)

FY25-26	FY 24-25
Job Title/Grade	Job Title/Grade
General Manager	DOO/Acting GM
HR Administrator	HR Administrator
Executive Assistant	Executive Assistant
Staff Accountant	Staff Accountant w/Payroll
Accountant	AP Payroll Assistant
	Finance Controller
	Purchasing/Contracts
	Sr. Accountant
Engineering Admin	
Administrative Assistant	
Deputy General Manager	

Table 2: Draft FY 25-26 Administration Budget vs. FY 24-25 Budget

Salaries and Fringe	FY 25-26		FY 24-25		% Difference	
	4	5	4	5	4	5
Regular Salaries-Admin & IT	\$ 729,700	\$ 135,144	\$ 1,116,326	\$ 132,980	-53.0%	1.6%
Overtime Salaries-Admin & IT	\$ 500	\$ -	\$ 7,500	\$ -	-1400.0%	
Comp Time - Admin	\$ 1,000	\$ -	\$ 2,000	\$ -	-100.0%	
Fringe Benefits IN to PC's & Depts.	\$ 374,864	\$ 69,427	\$ 600,881	\$ 71,578	-60.3%	-3.1%
Total Payroll Costs	\$ 1,106,064	\$ 204,570	\$ 1,726,707	\$ 204,558	-56.1%	0.0%
Other Expenses						
Small Tools and Supplies	\$ -	\$ -	\$ -	\$ 1,000	-100.0%	
Public Notices/ Public Relations	\$ -	\$ -	\$ -	\$ -		
HR Recruitment & Employee Relations	\$ 26,050	\$ -	\$ 32,100	\$ -	-23.2%	
Subscriptions	\$ 2,071	\$ -	\$ 2,030	\$ 600	-100.0%	
Contract Labor	\$ -	\$ -	\$ 35,000	\$ -		
Management Support Services	\$ 150,000	\$ -	\$ 55,000	\$ -	63.3%	
Audit	\$ 45,000	\$ -	\$ 40,800	\$ -	9.3%	
Legal	\$ 100,000	\$ -	\$ 125,000	\$ -	-25.0%	
Postage	\$ 1,000	\$ -	\$ 1,545	\$ -	-54.5%	
Office Supplies - Admin	\$ 4,000	\$ -	\$ 4,120	\$ -	-3.0%	
Office Equipment Admin or IT	\$ 1,000	\$ -	\$ 1,000	\$ -	0.0%	
Memberships & Trainings	\$ 105,000	\$ 4,865	\$ 107,500	\$ 8,950	-2.4%	-84.0%
Travel & Conference	\$ 15,000	\$ 2,000	\$ 25,000	\$ 1,500	-66.7%	25.0%
Scholarship Sponsorship	\$ 1,000	\$ -	\$ 1,000	\$ -	0.0%	
Education Reimbursement	\$ 1,000	\$ -	\$ 1,500	\$ -	-50.0%	
Software Maintenance Agreements	\$ -	\$ 64,030	\$ -	\$ 63,180		1.3%
Hardware Maintenance Agreements	\$ -	\$ 3,100	\$ -	\$ 10,300		-232.3%
Cloud Subscriptions (Internet)	\$ -	\$ 172,679	\$ -	\$ 195,018		-12.9%
Telecommunications	\$ -	\$ 145,382	\$ -	\$ 163,882		-12.7%
IT Professional Services	\$ -	\$ 150,000	\$ -	\$ 106,200		29.2%
Small Hardware Purchases (< \$5k)	\$ -	\$ 36,500	\$ -	\$ 28,400		22.2%
Small Software Purchases & Licenses(<\$5k)	\$ -	\$ 27,522	\$ -	\$ 31,000		-12.6%
IT Memberships	\$ -	\$ 160	\$ -	\$ 160		0.0%
Operating Leases	\$ -	\$ 56,000	\$ -	\$ 64,173		-14.6%
Miscellaneous	\$ 20,000	\$ 4,000	\$ 27,000	\$ 5,000	-35.0%	-25.0%
Mileage	\$ 1,000	\$ -	\$ 800	\$ 3,200	20.0%	
Contract Services Misc	\$ 4,000	\$ -	\$ 5,800	\$ 3,254	-45.0%	
IT Allocations in to PC's & Depts.	\$ 138,922	\$ -	\$ 142,005	\$ -	-2.2%	
Shipping/Freight	\$ 1,000	\$ -	\$ 2,000	\$ -	-100.0%	
Monthly Car Allowance	\$ 16,200	\$ 4,200	\$ 10,200	\$ -	37.0%	100.0%
Subtotal Other Expenses	\$ 632,243	\$ 670,438	\$ 619,400	\$ 685,817	2.0%	-2.3%
Subtotal (General Fund)			\$ 227,290			
Total Expenses (Including Labor & Fringe)	\$ 1,738,306	\$ 875,008	\$ 2,573,397	\$ 890,375	-48.0%	-1.8%
Difference in Cost Between FY 24-25 to FY 25-26			\$ 835,091			

Advisory Committee Review

The Finance Committee met on March 18, 2025, to review the draft FY 25-26 budget. The Finance Committee members recommended that SOCWA staff bring Table 2 to the Board for review and comment.

Recommended Action: Board Discussion, Direction and Action.

Agenda Item

8.B.

Board of Directors Meeting

Meeting Date: April 3, 2024

TO: Board of Directors
FROM: Amber Boone, General Manager
SUBJECT: Resolution No. 2025-06: A Resolution of the Board of Directors of the South Orange County Wastewater Authority Authorizing Investment of Monies In the Local Agency Investment Fund (LAIF)

Background

The Board of Directors is requested to review and update the signatories to its Local Agency Investment Fund (LAIF) accounts.

Advisory Committee Review

None

Prior Related Project Committee or Board Action(s)

Approval of Resolution No. 2024-08

Fiscal Impact

None

Recommended Action: Staff recommends that the Board of Directors approve Resolution No. 2025-06, A Resolution of the Board of Directors of the South Orange County Wastewater Authority Authorizing Investment of Monies in the Local Agency Investment Fund (LAIF).

Attachment (s)

Resolution No. 2025-06

RESOLUTION NO. 2025-06

**RESOLUTION OF THE BOARD OF DIRECTORS OF THE
SOUTH ORANGE COUNTY WASTEWATER AUTHORITY
AUTHORIZING INVESTMENT OF MONIES IN THE
LOCAL AGENCY INVESTMENT FUND**

SOUTH ORANGE COUNTY WASTEWATER AUTHORITY
34156 DEL OBISPO STREET
DANA POINT, CA 92629

TELEPHONE (949) 234-5400

WHEREAS, pursuant to Chapter 730 of the statutes of 1976, Section 16429.1 was added to the California Government Code to create a Local Agency Investment Fund in the State Treasury for the deposit of money for a local agency for purposes of investment by the State Treasurer; and

WHEREAS, the Board of Directors of the South Orange County Wastewater Authority does hereby find that the deposit and withdrawal of money in the Local Agency Investment Fund in accordance with the provisions of Section 16429.1 of the Government Code for the purpose of investment as stated therein is in the best interests of the SOUTH ORANGE COUNTY WASTEWATER AUTHORITY ("SOCWA").

THEREFORE, BE IT RESOLVED that the following SOUTH ORANGE COUNTY WASTEWATER AUTHORITY officers or their successors in office shall be authorized to order the deposit or withdrawal of monies in the Local Agency Investment Fund:

Authorized Representatives

Amber Boone _____

James L. Burror, Jr. _____

THEREFORE, BE IT RESOLVED that Resolution No. 2024-08 is hereby repealed in its entirety, effective April 3, 2025, and further that Resolution No. 2025-06 shall become effective April 3, 2025.

PASSED AND ADOPTED by the Board of Directors of the SOUTH ORANGE COUNTY WASTEWATER AUTHORITY, County of Orange, State of California, on the 3rd day of April 2025.

By: _____
Frank Ury, Board Chair

(Seal)

By: _____
Amber Boone, Secretary/General Manager

Agenda Item

8.C.

Board of Directors Meeting

Meeting Date: April 3, 2025

TO: Board of Directors
FROM: Amber Boone, General Manager
SUBJECT: Resolution No. 2025-07, A Resolution of the Board of Directors of the South Orange County Wastewater Authority Authorizing the Establishment of Deposit Accounts with BMO Harris Bank N.A.

Background

The Board of Directors is requested to review and update the signatories to its bank accounts.

Advisory Committee Review

None

Prior Related Project Committee or Board Action(s)

Approval of Resolution No. 2024-09

Fiscal Impact

None

Recommended Action: Staff recommends that the Board of Directors approve Resolution No. 2025-07, A Resolution of the Board of Directors of the South Orange County Wastewater Authority Authorizing the Establishment of Deposit Accounts with BMO Harris Bank N.A.

Attachment (s)

Resolution No. 2025-07

RESOLUTION NO. 2025-07

**A RESOLUTION OF THE BOARD OF DIRECTORS OF THE
SOUTH ORANGE COUNTY WASTEWATER AUTHORITY AUTHORIZING
ESTABLISHMENT OF DEPOSIT ACCOUNTS WITH BMO Harris Bank N.A.**

WHEREAS, the South Orange County Wastewater Authority desires to establish certain deposit accounts with the BMO Harris Bank N.A. and

WHEREAS, BMO Harris Bank N.A. requires that SOCWA approve a Corporate Resolution authorizing said deposit accounts.

THEREFORE, BE IT RESOLVED that the Board of Directors of the South Orange County Wastewater Authority does hereby RESOLVE, DETERMINE, AND ORDER as follows:

Section 1 That this organization establishes one or more deposit accounts with BMO Harris Bank N.A. ("Bank") and that the organization adopts for each account the Bank's terms and conditions and recognizes that the Bank may add to, delete from, or otherwise amend those terms and conditions from time to time by notice.

Section 2 That the authorized representative(s) named below are each authorized to establish for this organization one or more deposit accounts now and additional accounts from time to time, to enter into funds transfer, cash management, and other service agreements related to this organization's deposit accounts, to designate from time to time, persons in such number as may be directed, to operate each account or otherwise handle this organization's funds and otherwise give instructions regarding this organization's funds and accounts.

Authorized Representatives

Amber Boone James L. Burror, Jr.

Section 3 That the Authority conferred is in addition to any other, including conflicting authorizations, in effect and shall remain in force until Bank receives written notice of its revocation at the office where the account is maintained or at such other location as Bank may direct.

Section 4 Resolution No. 2024-09 is hereby repealed in its entirety, effective April 3, 2025.

Section 5 Resolution No. 2025-07 shall become effective April 3, 2025.

PASSED and **ADOPTED** by the Board of Directors of the SOUTH ORANGE COUNTY WASTEWATER AUTHORITY, County of Orange, State of California, on the 3rd day of April 2025.

SOUTH ORANGE COUNTY WASTEWATER AUTHORITY

By: _____
Frank Ury, Board Chair

(Seal)

By: _____
Amber Boone, Secretary/General Manager

STATE OF CALIFORNIA)
) ss.
COUNTY OF ORANGE)

I, AMBER BOONE, Secretary of the Board of Directors of the SOUTH ORANGE COUNTY WASTEWATER AUTHORITY ("SOCWA"), do hereby certify that the foregoing Resolution No. 2025-07 was duly adopted by the SOCWA Board of Directors at their Board Meeting held on the 3rd day of April 2025 and that it was so adopted by the following vote:

AYES:

NOES:

ABSENT:

ABSTAIN:

Dated this 7th day of November 2024

Amber Boone, Secretary/Acting General Manager
SOUTH ORANGE COUNTY WASTEWATER AUTHORITY

STATE OF CALIFORNIA)
) ss.
COUNTY OF ORANGE)

I, AMBER BOONE, Secretary of the Board of Directors of the SOUTH ORANGE COUNTY WASTEWATER AUTHORITY ("SOCWA"), do hereby certify that the foregoing is a full, true, and correct copy of Resolution No. 2025-07 of said Board and that the same has not been amended or repealed.

Dated this 3rd day of April 2025.

Amber Boone, Secretary/General Manager
SOUTH ORANGE COUNTY WASTEWATER AUTHORITY

(Seal)

Agenda Item

8.E.

Board of Directors Meeting

Meeting Date: April 3, 2025

TO: Board of Directors
FROM: Amber Boone, General Manager
SUBJECT: General Manager's Status Report

ADMINISTRATION

SOCWA Uniform Purchasing Policy Compliance

Per SOCWA December 2024 Uniform Purchasing Policy, the General Manager will report authorized purchases to the Board that were over \$25,000 but under \$100,000. The following items were authorized since the last Board meeting report:

Purchase	Amount
None	NA

O&M

Ernie Leal

SOCWA's Ernie Leal was awarded the Gold Award for Supervisor of the Year by the Santa Ana River Basin Section (SARBS) of the California Water Environment Association (CWEA). He moves on to compete at the State level.

